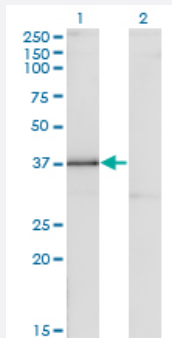


DLX3 monoclonal antibody (M09), clone 3F7

Catalog # H00001747-M09

Size 100 ug

Applications

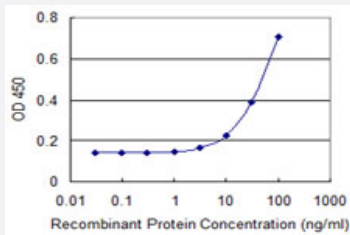


Western Blot (Transfected lysate)

Western Blot analysis of DLX3 expression in transfected 293T cell line by DLX3 monoclonal antibody (M09), clone 3F7.

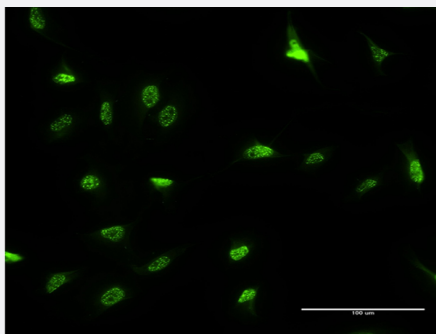
Lane 1: DLX3 transfected lysate (31.7 KDa).

Lane 2: Non-transfected lysate.



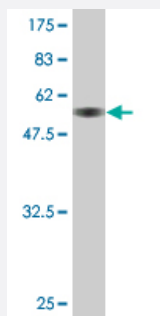
Sandwich ELISA (Recombinant protein)

Detection limit for recombinant GST tagged DLX3 is 3 ng/ml as a capture antibody.



Immunofluorescence

Immunofluorescence of monoclonal antibody to DLX3 on HeLa cell . [antibody concentration 10 ug/ml]



Western Blot detection against Immunogen (57.31 KDa) .

Specification

Product Description	Mouse monoclonal antibody raised against a full-length recombinant DLX3.
Immunogen	DLX3 (AAH28970, 1 a.a. ~ 287 a.a) full-length recombinant protein with GST tag. MW of the GST tag alone is 26 KDa.
Sequence	MSGSFDRKLSSILTDISSLSCHAGSKDSPTLPESVTDLGYYSA PQHDYYSGQPYGQTVNPTYTH HQFNLNGLAGTGAYSPKSEYTYGASYRQYGAYREQPLPAQDPVSVKEEPEAEVRMVNGKPKKV RKPRTIYSSYQLAALQRRFQKAQYLALPERAELAAQLGLTQTQVKWIFQNRRSKFKKLYKNGEVPL EHSPNNSDSMACNSPPSPALWDTSSHSTPAPARSQLPPLPYASPSYLDPTNSWYHAQNLS GPHLQQQPPQPATLHHASPGPPPNPGAVY
Host	Mouse
Reactivity	Human
Isotype	IgG2a Kappa
Quality Control Testing	Antibody Reactive Against Recombinant Protein. Western Blot detection against Immunogen (57.31 KDa) .
Storage Buffer	In 1x PBS, pH 7.4
Storage Instruction	Store at -20°C or lower. Aliquot to avoid repeated freezing and thawing.

Applications

● Western Blot (Transfected lysate)

Western Blot analysis of DLX3 expression in transfected 293T cell line by DLX3 monoclonal antibody (M09), clone 3F7.

Lane 1: DLX3 transfected lysate(31.7 KDa).

Lane 2: Non-transfected lysate.

[Protocol Download](#)

- Western Blot (Recombinant protein)

[Protocol Download](#)

- Sandwich ELISA (Recombinant protein)

Detection limit for recombinant GST tagged DLX3 is 3 ng/ml as a capture antibody.

[Protocol Download](#)

- ELISA

- Immunofluorescence

Immunofluorescence of monoclonal antibody to DLX3 on HeLa cell . [antibody concentration 10 ug/ml]

Gene Info — DLX3

Entrez GeneID [1747](#)

GeneBank Accession# [BC028970](#)

Protein Accession# [AAH28970](#)

Gene Name DLX3

Gene Alias A14, TDO

Gene Description distal-less homeobox 3

Omim ID [104510](#) [190320](#) [600525](#)

Gene Ontology [Hyperlink](#)

Gene Summary Many vertebrate homeo box-containing genes have been identified on the basis of their sequence similarity with Drosophila developmental genes. Members of the Dlx gene family contain a homeo box that is related to that of Distal-less (Dll), a gene expressed in the head and limbs of the developing fruit fly. The Distal-less (Dlx) family of genes comprises at least 6 different members, DLX1-DLX6. Trichodontoosseous syndrome (TDO), an autosomal dominant condition, has been correlated with DLX3 gene mutation. This gene is located in a tail-to-tail configuration with another member of the gene family on the long arm of chromosome 17. Mutations in this gene have been associated with the autosomal dominant conditions trichodontoosseous syndrome and amelogenesis imperfecta with taurodontism. [provided by RefSeq]

Other Designations distal-less homeo box 3

Disease

- [Abnormalities](#)
- [Cleft Lip](#)
- [Cleft Palate](#)
- [Genetic Predisposition to Disease](#)
- [Syndrome](#)
- [Tooth Abnormalities](#)