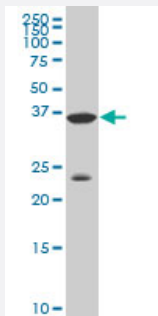


DLX3 monoclonal antibody (M02), clone 3B8

Catalog # H00001747-M02

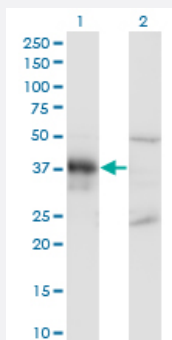
Size 100 ug

Applications



Western Blot (Cell lysate)

DLX3 monoclonal antibody (M02), clone 3B8 Western Blot analysis of DLX3 expression in A-549 (Cat # L025V1).

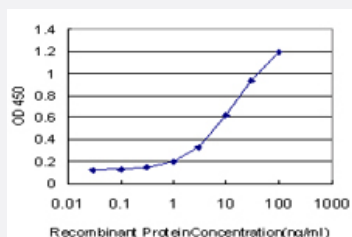


Western Blot (Transfected lysate)

Western Blot analysis of DLX3 expression in transfected 293T cell line by DLX3 monoclonal antibody (M02), clone 3B8.

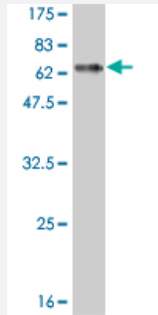
Lane 1: DLX3 transfected lysate(31.7 KDa).

Lane 2: Non-transfected lysate.



Sandwich ELISA (Recombinant protein)

Detection limit for recombinant GST tagged DLX3 is approximately 0.3ng/ml as a capture antibody.



Western Blot detection against Immunogen (57.31 KDa) .

Specification

Product Description	Mouse monoclonal antibody raised against a full length recombinant DLX3.
Immunogen	DLX3 (AAH12361, 1 a.a. ~ 287 a.a) full-length recombinant protein with GST tag. MW of the GST tag alone is 26 KDa.
Sequence	MSGSFDRKLSSILTDISSLSCHAGSKDSPTLPESVTDLGYYSA PQHDYYSGQPYGQTVNPTYTH HQFNLNGLAGTGAYSPKSEYTYGASYRQYGAYREQPLPAQDPVSVKEEPEAEVRMVNGKPKKV RKPRTIYSSYQLAALQRRFQKAQYLALPERAELAAQLGLTQTQVKWIFQNRRSKFKKLYKNGEVPL EHSPNNSDSMACNSPPSPALWDTSSHSTPAPARSQLPPPLPYSASPSYLDPTNSWYHAQNLS GPHLQQQPPQPATLHHASPGPPPNPGAVY
Host	Mouse
Reactivity	Human
Isotype	IgG1 Kappa
Quality Control Testing	Antibody Reactive Against Recombinant Protein. Western Blot detection against Immunogen (57.31 KDa) .
Storage Buffer	In 1x PBS, pH 7.4
Storage Instruction	Store at -20°C or lower. Aliquot to avoid repeated freezing and thawing.

Applications

- Western Blot (Cell lysate)

DLX3 monoclonal antibody (M02), clone 3B8 Western Blot analysis of DLX3 expression in A-549 (Cat # L025V1).

[Protocol Download](#)

- Western Blot (Transfected lysate)

Western Blot analysis of DLX3 expression in transfected 293T cell line by DLX3 monoclonal antibody (M02), clone 3B8.

Lane 1: DLX3 transfected lysate(31.7 KDa).

Lane 2: Non-transfected lysate.

[Protocol Download](#)

- Western Blot (Recombinant protein)

[Protocol Download](#)

- Sandwich ELISA (Recombinant protein)

Detection limit for recombinant GST tagged DLX3 is approximately 0.3ng/ml as a capture antibody.

[Protocol Download](#)

- ELISA

Gene Info — DLX3

Entrez GeneID [1747](#)

GeneBank Accession# [BC012361](#)

Protein Accession# [AAH12361](#)

Gene Name DLX3

Gene Alias AI4, TDO

Gene Description distal-less homeobox 3

Omim ID [104510](#) [190320](#) [600525](#)

Gene Ontology [Hyperlink](#)

Gene Summary

Many vertebrate homeo box-containing genes have been identified on the basis of their sequence similarity with Drosophila developmental genes. Members of the Dlx gene family contain a homeo box that is related to that of Distal-less (Dll), a gene expressed in the head and limbs of the developing fruit fly. The Distal-less (Dlx) family of genes comprises at least 6 different members, DLX1-DLX6. Trichodontoosseous syndrome (TDO), an autosomal dominant condition, has been correlated with DLX3 gene mutation. This gene is located in a tail-to-tail configuration with another member of the gene family on the long arm of chromosome 17. Mutations in this gene have been associated with the autosomal dominant conditions trichodontoosseous syndrome and amelogenesis imperfecta with taurodontism. [provided by RefSeq]

Other Designations

distal-less homeo box 3

Publication Reference

- [NOTCH1 signaling regulates the BMP2/DLX-3 directed osteogenic differentiation of dental follicle cells.](#)

Viale-Bouroncle S, Gosau M, Morsczeck C.

Biochemical and Biophysical Research Communications 2014 Jan; 443(2):500.

Application: WB, Human, Dental follicle cells

Disease

- [Abnormalities](#)
- [Cleft Lip](#)
- [Cleft Palate](#)
- [Genetic Predisposition to Disease](#)
- [Syndrome](#)
- [Tooth Abnormalities](#)