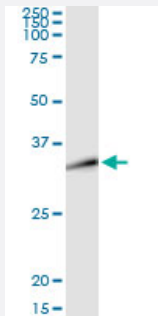


# DLX1 (Human) IP-WB Antibody Pair

Catalog # H00001745-PW3

Size 1 Set

## Applications



Immunoprecipitation of DLX1 transfected lysate using mouse monoclonal anti-DLX1 and Protein A Magnetic Bead ([U0007](#)), and immunoblotted with rabbit polyclonal anti-DLX1.

## Specification

<b>Product Description</b>	This IP-WB antibody pair set comes with one antibody for immunoprecipitation and another to detect the precipitated protein in western blot.
<b>Reactivity</b>	Human
<b>Quality Control Testing</b>	Immunoprecipitation-Western Blot (IP-WB) Immunoprecipitation of DLX1 transfected lysate using mouse monoclonal anti-DLX1 and Protein A Magnetic Bead ( <a href="#">U0007</a> ), and immunoblotted with rabbit polyclonal anti-DLX1.
<b>Supplied Product</b>	Antibody pair set content: 1. Antibody pair for IP: mouse monoclonal anti-DLX1 (300 ug) 2. Antibody pair for WB: rabbit polyclonal anti-DLX1 (50 ul)
<b>Storage Instruction</b>	Store reagents of the antibody pair set at -20°C or lower. Please aliquot to avoid repeated freeze thaw cycle. Reagents should be returned to -20°C storage immediately after use.

## Applications

- Immunoprecipitation-Western Blot

[Protocol Download](#)

## Gene Info — DLX1

**Entrez GeneID** [1745](#)

**Gene Name** DLX1

**Gene Alias** -

**Gene Description** distal-less homeobox 1

**Omim ID** [600029](#)

**Gene Ontology** [Hyperlink](#)

**Gene Summary** This gene encodes a member of a homeobox transcription factor gene family similar to the Drosophila distal-less gene. The encoded protein is localized to the nucleus where it may function as a transcriptional regulator of signals from multiple TGF- $\beta$  superfamily members. The encoded protein may play a role in the control of craniofacial patterning and the differentiation and survival of inhibitory neurons in the forebrain. This gene is located in a tail-to-tail configuration with another member of the family on the long arm of chromosome 2. Alternatively spliced transcript variants encoding different isoforms have been described. [provided by RefSeq]

**Other Designations** OTTHUMP00000082494|OTTHUMP00000082497|distal-less homeobox 1

## Disease

- [Attention Deficit Disorder with Hyperactivity](#)
- [Autistic Disorder](#)
- [Cleft Lip](#)
- [Cleft Palate](#)
- [Genetic Predisposition to Disease](#)
- [NARP](#)
- [Schizophrenia](#)