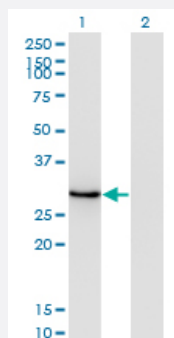


# DLX1 monoclonal antibody (M14), clone 4H7

Catalog # H00001745-M14

Size 100 ug

## Applications

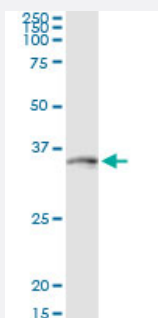


### Western Blot (Transfected lysate)

Western Blot analysis of DLX1 expression in transfected 293T cell line by DLX1 monoclonal antibody (M14), clone 4H7.

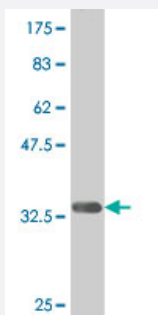
Lane 1: DLX1 transfected lysate (27.3 KDa).

Lane 2: Non-transfected lysate.



### Immunoprecipitation

Immunoprecipitation of DLX1 transfected lysate using anti-DLX1 monoclonal antibody and Protein A Magnetic Bead, and immunoblotted with DLX1 MaxPab rabbit polyclonal antibody.



Western Blot detection against Immunogen (34.25 KDa) .

## Specification

### Product Description

Mouse monoclonal antibody raised against a full length recombinant DLX1.

<b>Immunogen</b>	DLX1 (NP_835221, 181 a.a. ~ 254 a.a) full length recombinant protein with GST tag. MW of the GST tag alone is 26 KDa.
<b>Sequence</b>	SKFKKLMKQGGAALGSALENGRALSAGSPVPVPPGWNPNSSSGKGSGGNAGSYIPSYTSWYPS AHQEAMQQPQL*
<b>Host</b>	Mouse
<b>Reactivity</b>	Human
<b>Isotype</b>	IgG2a Kappa
<b>Quality Control Testing</b>	Antibody Reactive Against Recombinant Protein. Western Blot detection against Immunogen (34.25 KDa) .
<b>Storage Buffer</b>	In 1x PBS, pH 7.4
<b>Storage Instruction</b>	Store at -20°C or lower. Aliquot to avoid repeated freezing and thawing.

## Applications

- Western Blot (Transfected lysate)

Western Blot analysis of DLX1 expression in transfected 293T cell line by DLX1 monoclonal antibody (M14), clone 4H7.

Lane 1: DLX1 transfected lysate(27.3 KDa).

Lane 2: Non-transfected lysate.

[Protocol Download](#)

- Western Blot (Recombinant protein)

[Protocol Download](#)

- Immunoprecipitation

Immunoprecipitation of DLX1 transfected lysate using anti-DLX1 monoclonal antibody and Protein A Magnetic Bead, and immunoblotted with DLX1 MaxPab rabbit polyclonal antibody.

[Protocol Download](#)

- ELISA

## Gene Info — DLX1

Entrez GeneID [1745](#)

GeneBank Accession#	<a href="#">NM_178120</a>
Protein Accession#	<a href="#">NP_835221</a>
Gene Name	DLX1
Gene Alias	-
Gene Description	distal-less homeobox 1
Omim ID	<a href="#">600029</a>
Gene Ontology	<a href="#">Hyperlink</a>
Gene Summary	<p>This gene encodes a member of a homeobox transcription factor gene family similar to the Drosophila distal-less gene. The encoded protein is localized to the nucleus where it may function as a transcriptional regulator of signals from multiple TGF-<math>\beta</math> superfamily members. The encoded protein may play a role in the control of craniofacial patterning and the differentiation and survival of inhibitory neurons in the forebrain. This gene is located in a tail-to-tail configuration with another member of the family on the long arm of chromosome 2. Alternatively spliced transcript variants encoding different isoforms have been described. [provided by RefSeq]</p>
Other Designations	OTTHUMP00000082494 OTTHUMP00000082497 distal-less homeo box 1

## Disease

- [Attention Deficit Disorder with Hyperactivity](#)
- [Autistic Disorder](#)
- [Cleft Lip](#)
- [Cleft Palate](#)
- [Genetic Predisposition to Disease](#)
- [NARP](#)
- [Schizophrenia](#)