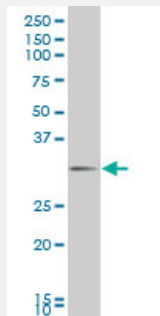


DLX1 monoclonal antibody (M12), clone 1B2

Catalog # H00001745-M12

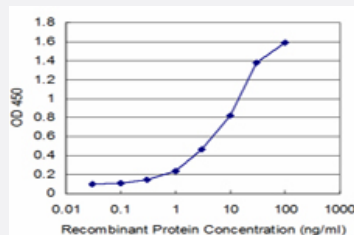
Size 100 ug

Applications



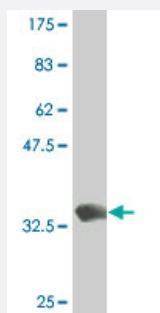
Western Blot (Cell lysate)

DLX1 monoclonal antibody (M12), clone 1B2 Western Blot analysis of DLX1 expression in SW-13 (Cat # L005V1).



Sandwich ELISA (Recombinant protein)

Detection limit for recombinant GST tagged DLX1 is approximately 0.3ng/ml as a capture antibody.



Western Blot detection against Immunogen (34.25 KDa) .

Specification

Product Description

Mouse monoclonal antibody raised against a full length recombinant DLX1.

Immunogen	DLX1 (NP_835221, 181 a.a. ~ 254 a.a) full length recombinant protein with GST tag. MW of the GST tag alone is 26 KDa.
Sequence	SKFKKLMKQGGAALGSA L A N G R A L S A G S P P V P P G W N P N S S S G K G S G G N A G S Y I P S Y T S W Y P S A H Q E A M Q Q P Q L *
Host	Mouse
Reactivity	Human
Isotype	IgG2a Kappa
Quality Control Testing	Antibody Reactive Against Recombinant Protein. Western Blot detection against Immunogen (34.25 KDa) .
Storage Buffer	In 1x PBS, pH 7.4
Storage Instruction	Store at -20°C or lower. Aliquot to avoid repeated freezing and thawing.

Applications

- Western Blot (Cell lysate)

DLX1 monoclonal antibody (M12), clone 1B2 Western Blot analysis of DLX1 expression in SW-13 (Cat # L005V1).

[Protocol Download](#)

- Western Blot (Recombinant protein)

[Protocol Download](#)

- Sandwich ELISA (Recombinant protein)

Detection limit for recombinant GST tagged DLX1 is approximately 0.3ng/ml as a capture antibody.

[Protocol Download](#)

- ELISA

Gene Info — DLX1

Entrez GeneID	1745
GeneBank Accession#	NM_178120
Protein Accession#	NP_835221

Gene Name	DLX1
Gene Alias	-
Gene Description	distal-less homeobox 1
Omim ID	600029
Gene Ontology	Hyperlink
Gene Summary	This gene encodes a member of a homeobox transcription factor gene family similar to the Drosophila distal-less gene. The encoded protein is localized to the nucleus where it may function as a transcriptional regulator of signals from multiple TGF- β superfamily members. The encoded protein may play a role in the control of craniofacial patterning and the differentiation and survival of inhibitory neurons in the forebrain. This gene is located in a tail-to-tail configuration with another member of the family on the long arm of chromosome 2. Alternatively spliced transcript variants encoding different isoforms have been described. [provided by RefSeq]
Other Designations	OTTHUMP00000082494 OTTHUMP00000082497 distal-less homeobox 1

Disease

- [Attention Deficit Disorder with Hyperactivity](#)
- [Autistic Disorder](#)
- [Cleft Lip](#)
- [Cleft Palate](#)
- [Genetic Predisposition to Disease](#)
- [NARP](#)
- [Schizophrenia](#)