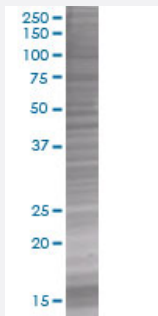


# SEPT1 293T Cell Transient Overexpression Lysate(Denatured)

Catalog # H00001731-T02

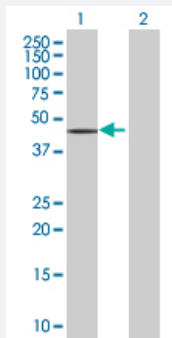
Size 100 uL

## Applications



### SDS-PAGE Gel

SEPT1 transfected lysate



### Western Blot

Lane 1: SEPT1 transfected lysate ( 42 KDa).

Lane 2: Non-transfected lysate.

## Specification

**Transfected Cell Line** 293T

**Plasmid** pCMV-SEPT1 full-length

**Host** Human

**Theoretical MW (kDa)** 42

**Quality Control Testing** Transient overexpression cell lysate was tested with Anti-SEPT1 antibody ([H00001731-B02](#)) by Western Blots.  
SDS-PAGE Gel  
SEPT1 transfected lysate  
Western Blot  
Lane 1: SEPT1 transfected lysate ( 42 KDa).  
Lane 2: Non-transfected lysate.

**Storage Buffer**

1X Sample Buffer (50 mM Tris-HCl, 2% SDS, 10% glycerol, 300 mM 2-mercaptoethanol, 0.01% Bromophenol blue)

**Storage Instruction**

Store at -80°C. Aliquot to avoid repeated freezing and thawing.

## Applications

- Western Blot

## Gene Info — SEPT1

**Entrez GeneID**[1731](#)**GeneBank Accession#**[NM\\_052838](#)**Protein Accession#**[NP\\_443070](#)**Gene Name**

SEPT1

**Gene Alias**

DIFF6, LARP, MGC20394, PNUTL3, SEP1

**Gene Description**

septin 1

**Gene Ontology**[Hyperlink](#)**Gene Summary**

This gene is a member of the septin family of GTPases. Members of this family are required for cytokinesis. This gene encodes a protein associated with the tau-based paired helical filament core, and may contribute to the formation of neurofibrillary tangles in Alzheimer's disease. [provided by RefSeq]

**Other Designations**

differentiation 6 (deoxyguanosine triphosphate triphosphohydrolase)|serologically defined breast cancer antigen NY-BR-24