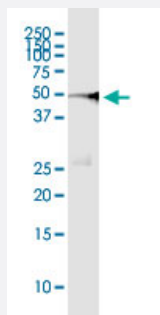


SEPT1 (Human) IP-WB Antibody Pair

Catalog # H00001731-PW3

Size 1 Set

Applications



Immunoprecipitation of SEPT1 transfected lysate using rabbit polyclonal anti-SEPT1 and Protein A Magnetic Bead ([U0007](#)), and immunoblotted with mouse purified polyclonal anti-SEPT1.

Specification

Product Description	This IP-WB antibody pair set comes with one antibody for immunoprecipitation and another to detect the precipitated protein in western blot.
Reactivity	Human
Quality Control Testing	Immunoprecipitation-Western Blot (IP-WB) Immunoprecipitation of SEPT1 transfected lysate using rabbit polyclonal anti-SEPT1 and Protein A Magnetic Bead (U0007), and immunoblotted with mouse purified polyclonal anti-SEPT1.
Supplied Product	Antibody pair set content: 1. Antibody pair for IP: rabbit polyclonal anti-SEPT1 (300 ul) 2. Antibody pair for WB: mouse purified polyclonal anti-SEPT1 (50 ug)
Storage Instruction	Store reagents of the antibody pair set at -20°C or lower. Please aliquot to avoid repeated freeze thaw cycle. Reagents should be returned to -20°C storage immediately after use.

Applications

- Immunoprecipitation-Western Blot

[Protocol Download](#)

Gene Info — SEPT1

Entrez GeneID	1731
Gene Name	SEPT1
Gene Alias	DIFF6, LARP, MGC20394, PNUTL3, SEP1
Gene Description	septin 1
Gene Ontology	Hyperlink
Gene Summary	This gene is a member of the septin family of GTPases. Members of this family are required for cytokinesis. This gene encodes a protein associated with the tau-based paired helical filament core, and may contribute to the formation of neurofibrillary tangles in Alzheimer's disease. [provided by RefSeq]
Other Designations	differentiation 6 (deoxyguanosine triphosphate triphosphohydrolase) serologically defined breast cancer antigen NY-BR-24