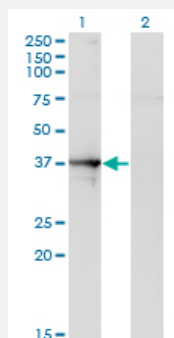


SEPT1 monoclonal antibody (M03), clone 1F12

Catalog # H00001731-M03

Size 100 ug

Applications

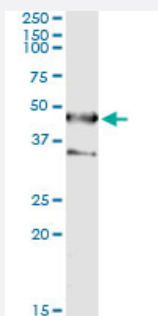


Western Blot (Transfected lysate)

Western Blot analysis of SEPT1 expression in transfected 293T cell line by SEPT1 monoclonal antibody (M03), clone 1F12.

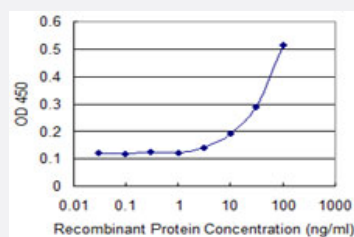
Lane 1: SEPT1 transfected lysate(42 KDa).

Lane 2: Non-transfected lysate.



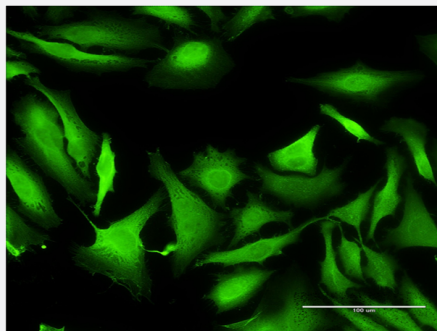
Immunoprecipitation

Immunoprecipitation of SEPT1 transfected lysate using anti-SEPT1 monoclonal antibody and Protein A Magnetic Bead, and immunoblotted with SEPT1 MaxPab rabbit polyclonal antibody.



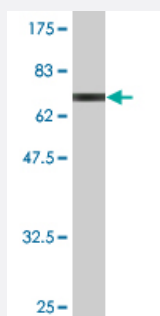
Sandwich ELISA (Recombinant protein)

Detection limit for recombinant GST tagged SEPT1 is 3 ng/ml as a capture antibody.



Immunofluorescence

Immunofluorescence of monoclonal antibody to SEPT1 on HeLa cell . [antibody concentration 10 ug/ml]



Western Blot detection against Immunogen (66.11 KDa) .

Specification

Product Description	Mouse monoclonal antibody raised against a full-length recombinant SEPT1.
Immunogen	SEPT1 (AAH12161, 1 a.a. ~ 367 a.a) full-length recombinant protein with GST tag. MW of the GST tag alone is 26 KDa.
Sequence	MDKEYVGFAALPNQLHRKSVKKGFDFTLMVAGESGLGKSTLNSLFLTNLYEDRQVPEASARLTQ TLAIERRGVEIEEGGVKVKLTLDVTPGFGDSVDCSDCWLPVVKFIEEQFEQYLDESGLNRKNIQD SRVHCCLYFISPFGRGLRPLDVAFLRAVHEKVNIIPVIGKADALMPQETQALKQKIRDQLKEEEIH YQFPECDSDEDEDFKRQDAEMKESIPFAVVGSCVVRDGGNRPVRGRRYSWGTVEVENPHHCD FLNLRMLVQTHLQDLKEVTHDLLYEGYRARRLQSLARPGARDRASRSKLSRQSATEIPLPMLPL ADTEKLIREKDEELRRMQEMLEKMQAQMQRSQAQGEQSDAL
Host	Mouse
Reactivity	Human
Isotype	IgG2a Kappa
Quality Control Testing	Antibody Reactive Against Recombinant Protein. Western Blot detection against Immunogen (66.11 KDa) .
Storage Buffer	In 1x PBS, pH 7.4
Storage Instruction	Store at -20°C or lower. Aliquot to avoid repeated freezing and thawing.

Applications

- Western Blot (Transfected lysate)

Western Blot analysis of SEPT1 expression in transfected 293T cell line by SEPT1 monoclonal antibody (M03), clone 1F12.

Lane 1: SEPT1 transfected lysate(42 KDa).

Lane 2: Non-transfected lysate.

[Protocol Download](#)

- Western Blot (Recombinant protein)

[Protocol Download](#)

- Immunoprecipitation

Immunoprecipitation of SEPT1 transfected lysate using anti-SEPT1 monoclonal antibody and Protein A Magnetic Bead, and immunoblotted with SEPT1 MaxPab rabbit polyclonal antibody.

[Protocol Download](#)

- Sandwich ELISA (Recombinant protein)

Detection limit for recombinant GST tagged SEPT1 is 3 ng/ml as a capture antibody.

[Protocol Download](#)

- ELISA

- Immunofluorescence

Immunofluorescence of monoclonal antibody to SEPT1 on HeLa cell . [antibody concentration 10 ug/ml]

Gene Info — SEPT1

Entrez GeneID [1731](#)

GeneBank Accession# [BC012161](#)

Protein Accession# [AAH12161](#)

Gene Name SEPT1

Gene Alias DIFF6, LARP, MGC20394, PNUTL3, SEP1

Gene Description septin 1

Gene Ontology[Hyperlink](#)**Gene Summary**

This gene is a member of the septin family of GTPases. Members of this family are required for cytokinesis. This gene encodes a protein associated with the tau-based paired helical filament core, and may contribute to the formation of neurofibrillary tangles in Alzheimer's disease. [provided by RefSeq]

Other Designations

differentiation 6 (deoxyguanosine triphosphate triphosphohydrolase)|serologically defined breast cancer antigen NY-BR-24