

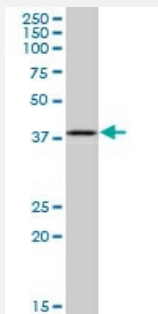
MaxPab®

## SEPT1 purified MaxPab mouse polyclonal antibody (B02P)

Catalog # H00001731-B02P

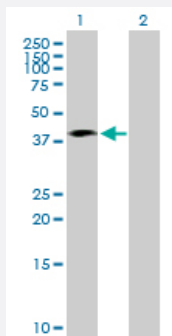
Size 50 ug

### Applications



#### Western Blot (Cell lysate)

SEPT1 MaxPab polyclonal antibody. Western Blot analysis of SEPT1 expression in MCF-7.



#### Western Blot (Transfected lysate)

Western Blot analysis of SEPT1 expression in transfected 293T cell line ([H00001731-T02](#)) by SEPT1 MaxPab polyclonal antibody.

Lane 1: SEPT1 transfected lysate(40.37 KDa).

Lane 2: Non-transfected lysate.

### Specification

#### Product Description

Mouse polyclonal antibody raised against a full-length human SEPT1 protein.

#### Immunogen

SEPT1 (NP\_443070.1, 1 a.a. ~ 367 a.a) full-length human protein.

#### Sequence

MDKEYVGFAALPNQLHRKSVKKGFDFTLMVAGESGLGKSTLNSLFLTNLYEDRQVPEASARLTQ  
TLAIERRGVEIEEGGVKVKLTLDVTPGFGDSVDCSDCWLPVVKFIEEQFEQYLDESGLNRKNIQD  
SRVHCCLYFISPFGRGLRPLDVAFLRAVHEKVNIIPVIGKADALMPQETQALKQKIRDQLKEEEIHYY  
QFPECDSDEDEDFKRQDAEMKESIPFAVVGSCVVRDGGNRPVRGRRYSWGTVEVENPHHCD  
FLNLRRMLVQTHLQDLKEVTHDLLYEGYRARCQLSLARPGARDRASRSKLSRQSATEIPLPMLPL  
ADTEKLIREKDEELRRMQEMLEKMQAQMQQSQAQGEQSDAL

#### Host

Mouse

Reactivity	Human
Quality Control Testing	Antibody reactive against mammalian transfected lysate.
Storage Buffer	In 1x PBS, pH 7.4
Storage Instruction	Store at -20°C or lower. Aliquot to avoid repeated freezing and thawing.

## Applications

- Western Blot (Cell lysate)

SEPT1 MaxPab polyclonal antibody. Western Blot analysis of SEPT1 expression in MCF-7.

[Protocol Download](#)

- Western Blot (Transfected lysate)

Western Blot analysis of SEPT1 expression in transfected 293T cell line ([H00001731-T02](#)) by SEPT1 MaxPab polyclonal antibody.

Lane 1: SEPT1 transfected lysate(40.37 KDa).

Lane 2: Non-transfected lysate.

[Protocol Download](#)

## Gene Info — SEPT1

Entrez GeneID	<a href="#">1731</a>
GeneBank Accession#	<a href="#">NM_052838</a>
Protein Accession#	<a href="#">NP_443070.1</a>
Gene Name	SEPT1
Gene Alias	DIFF6, LARP, MGC20394, PNUTL3, SEP1
Gene Description	sepin 1
Gene Ontology	<a href="#">Hyperlink</a>
Gene Summary	This gene is a member of the sepin family of GTPases. Members of this family are required for cytokinesis. This gene encodes a protein associated with the tau-based paired helical filament core, and may contribute to the formation of neurofibrillary tangles in Alzheimer's disease. [provided by RefSeq]

**Other Designations**

differentiation 6 (deoxyguanosine triphosphate triphosphohydrolase)|serologically defined breast cancer antigen NY-BR-24

---