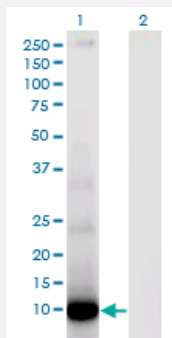


# DEFA6 monoclonal antibody (M01), clone 2D2

Catalog # H00001671-M01

Size 100 ug

## Applications

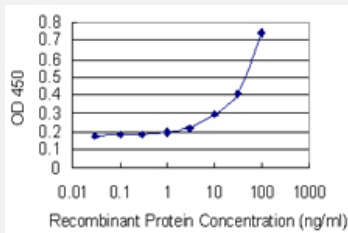


### Western Blot (Transfected lysate)

Western Blot analysis of DEFA6 expression in transfected 293T cell line by DEFA6 monoclonal antibody (M01), clone 2D2.

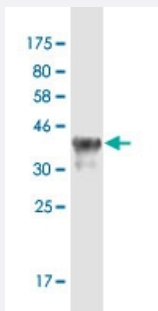
Lane 1: DEFA6 transfected lysate (Predicted MW: 11 KDa).

Lane 2: Non-transfected lysate.



### Sandwich ELISA (Recombinant protein)

Detection limit for recombinant GST tagged DEFA6 is 1 ng/ml as a capture antibody.



Western Blot detection against Immunogen (37.4 KDa) .

## Specification

### Product Description

Mouse monoclonal antibody raised against a full-length recombinant DEFA6.

<b>Immunogen</b>	DEFA6 (NP_001917.1, 1 a.a. ~ 100 a.a) full-length recombinant protein with GST tag. MW of the GST tag alone is 26 KDa.
<b>Sequence</b>	MRTLILTAVLLVALQAKAEPLQAEDDPLQAKAYEADAQEQRGANDQDFAVSFAEDASSSLRAL GSTRAFTCHCRRSCYSTEYSYGTCTVMGINHRFCCL
<b>Host</b>	Mouse
<b>Reactivity</b>	Human
<b>Isotype</b>	IgG2a Kappa
<b>Quality Control Testing</b>	Antibody Reactive Against Recombinant Protein. Western Blot detection against Immunogen (37.4 KDa) .
<b>Storage Buffer</b>	In 1x PBS, pH 7.4
<b>Storage Instruction</b>	Store at -20°C or lower. Aliquot to avoid repeated freezing and thawing.

## Applications

- Western Blot (Transfected lysate)

Western Blot analysis of DEFA6 expression in transfected 293T cell line by DEFA6 monoclonal antibody (M01), clone 2D2.

Lane 1: DEFA6 transfected lysate (Predicted MW: 11 KDa).

Lane 2: Non-transfected lysate.

[Protocol Download](#)

- Western Blot (Recombinant protein)

[Protocol Download](#)

- Sandwich ELISA (Recombinant protein)

Detection limit for recombinant GST tagged DEFA6 is 1 ng/ml as a capture antibody.

[Protocol Download](#)

- ELISA

## Gene Info — DEFA6

Entrez GeneID [1671](#)

GeneBank Accession# [NM\\_001926.2](#)

Protein Accession#	<a href="#">NP_001917.1</a>
Gene Name	DEFA6
Gene Alias	DEF6, HD-6
Gene Description	defensin, alpha 6, Paneth cell-specific
Omim ID	<a href="#">600471</a>
Gene Ontology	<a href="#">Hyperlink</a>
Gene Summary	<p>Defensins are a family of microbicidal and cytotoxic peptides thought to be involved in host defense. They are abundant in the granules of neutrophils and also found in the epithelia of mucosal surfaces such as those of the intestine, respiratory tract, urinary tract, and vagina. Members of the defensin family are highly similar in protein sequence and distinguished by a conserved cysteine motif. Several alpha defensin genes appear to be clustered on chromosome 8. The protein encoded by this gene, defensin, alpha 6, is highly expressed in the secretory granules of Paneth cells of the small intestine, and likely plays a role in host defense of human bowel. [provided by RefSeq]</p>
Other Designations	defensin 6 defensin, alpha 6

## Disease

- [Birth Weight](#)
- [Dermatitis](#)
- [Genetic Predisposition to Disease](#)
- [Glioblastoma](#)
- [Glioma](#)
- [HIV Infections](#)
- [Leukemia](#)
- [Meningeal Neoplasms](#)
- [Meningioma](#)