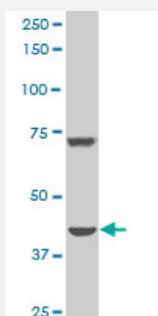


DDX11 polyclonal antibody (A01)

Catalog # H00001663-A01

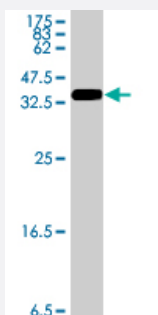
Size 50 uL

Applications



Western Blot (Cell lysate)

DDX11 polyclonal antibody (A01), Lot # 051017JC01 Western Blot analysis of DDX11 expression in Y-79 (Cat # L042V1).



Western Blot detection against Immunogen (36.01 KDa) .

Specification

Product Description	Mouse polyclonal antibody raised against a partial recombinant DDX11.
Immunogen	DDX11 (AAH11264, 40 a.a. ~ 129 a.a) partial recombinant protein with GST tag.
Sequence	GIFESPTGTGKSLSLICGALSWLRDFEQKKREEEARLLETGTGPLHDEKDESLCLSSSCEGAAGT PRPAGEPAWVTQFVQKKEERDLVDR
Host	Mouse
Reactivity	Human
Interspecies Antigen Sequence	Mouse (74)

Quality Control Testing

Antibody Reactive Against Recombinant Protein.
Western Blot detection against Immunogen (36.01 KDa) .

Storage Buffer

50 % glycerol

Storage Instruction

Store at -20°C or lower. Aliquot to avoid repeated freezing and thawing.

Applications

- Western Blot (Cell lysate)

DDX11 polyclonal antibody (A01), Lot # 051017JC01 Western Blot analysis of DDX11 expression in Y-79 (Cat # L042V1).

[Protocol Download](#)

- Western Blot (Recombinant protein)

[Protocol Download](#)

- ELISA

Gene Info — DDX11

Entrez GeneID

[1663](#)

GeneBank Accession#

[BC011264](#)

Protein Accession#

[AAH11264](#)

Gene Name

DDX11

Gene Alias

CHL1, CHLR1, KRG2, MGC133249, MGC9335

Gene Description

DEAD/H (Asp-Glu-Ala-Asp/His) box polypeptide 11 (CHL1-like helicase homolog, *S. cerevisiae*)

Omim ID

[601150](#)

Gene Ontology

[Hyperlink](#)

Gene Summary

DEAD box proteins, characterized by the conserved motif Asp-Glu-Ala-Asp (DEAD), are putative RNA helicases. They are implicated in a number of cellular processes involving alteration of RNA secondary structure such as translation initiation, nuclear and mitochondrial splicing, and ribosome and spliceosome assembly. Based on their distribution patterns, some members of this family are believed to be involved in embryogenesis, spermatogenesis, and cellular growth and division. This gene encodes a DEAD box protein, which is an enzyme that possesses both ATPase and DNA helicase activities. This gene is a homolog of the yeast CHL1 gene, and may function to maintain chromosome transmission fidelity and genome stability. Alternative splicing results in multiple transcript variants encoding distinct isoforms. [provided by RefSeq]

Other Designations

CHL1-related helicase gene-1|DEAD/H (Asp-Glu-Ala-Asp/His) box polypeptide 11|keratinocyte growth factor-regulated gene 2