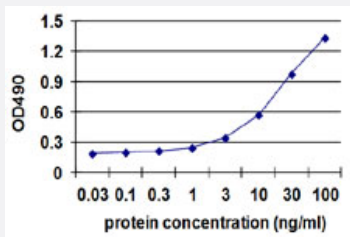


AKR1C2 (Human) Matched Antibody Pair

Catalog # H00001646-AP22 Size 1 Set

Applications



Sandwich ELISA detection sensitivity ranging from 1 ng/ml to 100 ng/ml.

Specification

Product Description	This antibody pair set comes with a matched antibody pair to detect and quantify the protein level of human AKR1C2.
Reactivity	Human
Quality Control Testing	Standard curve using recombinant protein (H00001646-P01) as an analyte. Sandwich ELISA detection sensitivity ranging from 1 ng/ml to 100 ng/ml.
Supplied Product	Antibody pair set content: 1. Capture antibody: rabbit MaxPab® affinity purified polyclonal anti-AKR1C2 (100 ug) 2. Detection antibody: mouse purified polyclonal anti-AKR1C2 (20 ug) *Reagents are sufficient for at least 1-2 x 96 well plates using recommended protocols.
Storage Instruction	Store reagents of the antibody pair set at -20°C or lower. Please aliquot to avoid repeated freeze thaw cycle. Reagents should be returned to -20°C storage immediately after use.

Applications

- ELISA Pair (Recombinant protein)

[Protocol Download](#)

Gene Info — AKR1C2

Entrez GeneID	1646
Gene Name	AKR1C2
Gene Alias	AKR1C-pseudo, BABP, DD, DD2, DDH2, HAKRD, HBAB, MCDR2
Gene Description	aldo-keto reductase family 1, member C2 (dihydrodiol dehydrogenase 2; bile acid binding protein ; 3-alpha hydroxysteroid dehydrogenase, type III)
Omim ID	600450
Gene Ontology	Hyperlink
Gene Summary	This gene encodes a member of the aldo/keto reductase superfamily, which consists of more than 40 known enzymes and proteins. These enzymes catalyze the conversion of aldehydes and ketones to their corresponding alcohols using NADH and/or NADPH as cofactors. The enzymes display overlapping but distinct substrate specificity. This enzyme binds bile acid with high affinity, and shows minimal 3-alpha-hydroxysteroid dehydrogenase activity. This gene shares high sequence identity with three other gene members and is clustered with those three genes at chromosome 10 p15-p14. [provided by RefSeq]
Other Designations	OTTHUMP00000018995 OTTHUMP00000044759 aldo-keto reductase family 1, member C2 chlordecone reductase homolog pseudo-chlordecone reductase trans-1,2-dihydrobenzene-1,2-diol dehydrogenase type II dihydrodiol dehydrogenase

Pathway

- [Metabolism of xenobiotics by cytochrome P450](#)

Disease

- [Breast Neoplasms](#)
- [Genetic Predisposition to Disease](#)
- [Lung Neoplasms](#)
- [Obesity](#)
- [Ovarian Failure](#)
- [Polycystic Ovary Syndrome](#)
- [Prostatic Neoplasms](#)

- [Puberty](#)
- [Thrombophilia](#)
- [Tobacco Use Disorder](#)