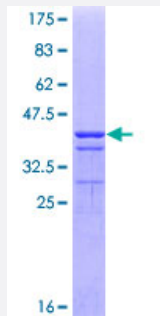


AKR1C1 (Human) Recombinant Protein (Q01)

Catalog # H00001645-Q01

Size 25 ug, 10 ug

Applications



Specification

Product Description	Human AKR1C1 partial ORF (AAH20216, 1 a.a. - 110 a.a.) recombinant protein with GST-tag at N-terminal.
Sequence	MDSKYQCVKLNDGHFMPVLGFGTYAPAEVPSKALEATKLAIEAGFRHIDSAHLYNNEEQVGLAIR SKIADGSVKREDIFYTSKLWCNSHRPELVRPALERSLKNLQLDY
Host	Wheat Germ (in vitro)
Theoretical MW (kDa)	37.84
Interspecies Antigen Sequence	Mouse (70); Rat (71)
Preparation Method	in vitro wheat germ expression system
Purification	Glutathione Sepharose 4 Fast Flow
Quality Control Testing	12.5% SDS-PAGE Stained with Coomassie Blue.
Storage Buffer	50 mM Tris-HCl, 10 mM reduced Glutathione, pH=8.0 in the elution buffer.
Storage Instruction	Store at -80°C. Aliquot to avoid repeated freezing and thawing.
Note	Best use within three months from the date of receipt of this protein.

Applications

- Enzyme-linked Immunoabsorbent Assay
- Western Blot (Recombinant protein)
- Antibody Production
- Protein Array

Gene Info — AKR1C1

Entrez GeneID	1645
GeneBank Accession#	BC020216
Protein Accession#	AAH20216
Gene Name	AKR1C1
Gene Alias	2-ALPHA-HSD, 20-ALPHA-HSD, C9, DD1, DDH, DDH1, H-37, HAKRC, MBAB, MGC8954
Gene Description	aldo-keto reductase family 1, member C1 (dihydrodiol dehydrogenase 1; 20-alpha (3-alpha)-hydroxysteroid dehydrogenase)
Omim ID	600449
Gene Ontology	Hyperlink
Gene Summary	This gene encodes a member of the aldo/keto reductase superfamily, which consists of more than 40 known enzymes and proteins. These enzymes catalyze the conversion of aldehydes and ketones to their corresponding alcohols by utilizing NADH and/or NADPH as cofactors. The enzymes display overlapping but distinct substrate specificity. This enzyme catalyzes the reaction of progesterone to the inactive form 20-alpha-hydroxy-progesterone. This gene shares high sequence identity with three other gene members and is clustered with those three genes at chromosome 10p15-p14. [provided by RefSeq]
Other Designations	20 alpha-hydroxysteroid dehydrogenase OTTHUMP00000018992 aldo-keto reductase C aldo-keto reductase family 1, member C1 chlordecone reductase homolog dihydrodiol dehydrogenase 1 dihydrodiol dehydrogenase isoform DD1 hepatic dihydrodiol dehydrogenase trans-

Pathway

- [Metabolism of xenobiotics by cytochrome P450](#)

Disease

- [Alzheimer Disease](#)
- [Breast Neoplasms](#)
- [Genetic Predisposition to Disease](#)
- [Lung Neoplasms](#)
- [Lymphoma](#)