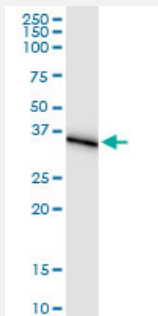


# AKR1C1 (Human) IP-WB Antibody Pair

Catalog # H00001645-PW1

Size 1 Set

## Applications



Immunoprecipitation of AKR1C1 transfected lysate using rabbit polyclonal anti-AKR1C1 and Protein A Magnetic Bead ([U0007](#)), and immunoblotted with mouse purified polyclonal anti-AKR1C1.

## Specification

<b>Product Description</b>	This IP-WB antibody pair set comes with one antibody for immunoprecipitation and another to detect the precipitated protein in western blot.
<b>Reactivity</b>	Human
<b>Interspecies Antigen Sequence</b>	Rat (69%)
<b>Quality Control Testing</b>	Immunoprecipitation-Western Blot (IP-WB) Immunoprecipitation of AKR1C1 transfected lysate using rabbit polyclonal anti-AKR1C1 and Protein A Magnetic Bead ( <a href="#">U0007</a> ), and immunoblotted with mouse purified polyclonal anti-AKR1C1.
<b>Supplied Product</b>	Antibody pair set content: 1. Antibody pair for IP: rabbit polyclonal anti-AKR1C1 (300 ul) 2. Antibody pair for WB: mouse purified polyclonal anti-AKR1C1 (50 ug)
<b>Storage Instruction</b>	Store reagents of the antibody pair set at -20°C or lower. Please aliquot to avoid repeated freeze thaw cycle. Reagents should be returned to -20°C storage immediately after use.

## Applications

- Immunoprecipitation-Western Blot

[Protocol Download](#)

## Gene Info — AKR1C1

Entrez GeneID	<a href="#">1645</a>
Gene Name	AKR1C1
Gene Alias	2-ALPHA-HSD, 20-ALPHA-HSD, C9, DD1, DDH, DDH1, H-37, HAKRC, MBAB, MGC8954
Gene Description	aldo-keto reductase family 1, member C1 (dihydrodiol dehydrogenase 1; 20-alpha (3-alpha)-hydroxysteroid dehydrogenase)
Omim ID	<a href="#">600449</a>
Gene Ontology	<a href="#">Hyperlink</a>
Gene Summary	This gene encodes a member of the aldo/keto reductase superfamily, which consists of more than 40 known enzymes and proteins. These enzymes catalyze the conversion of aldehydes and ketones to their corresponding alcohols by utilizing NADH and/or NADPH as cofactors. The enzymes display overlapping but distinct substrate specificity. This enzyme catalyzes the reaction of progesterone to the inactive form 20-alpha-hydroxy-progesterone. This gene shares high sequence identity with three other gene members and is clustered with those three genes at chromosome 10p15-p14. [provided by RefSeq]
Other Designations	20 alpha-hydroxysteroid dehydrogenase OTTHUMP00000018992 aldo-keto reductase C aldo-keto reductase family 1, member C1 chlordecone reductase homolog dihydrodiol dehydrogenase 1 dihydrodiol dehydrogenase isoform DD1 hepatic dihydrodiol dehydrogenase trans-

## Pathway

- [Metabolism of xenobiotics by cytochrome P450](#)

## Disease

- [Alzheimer Disease](#)
- [Breast Neoplasms](#)
- [Genetic Predisposition to Disease](#)
- [Lung Neoplasms](#)

- [Lymphoma](#)