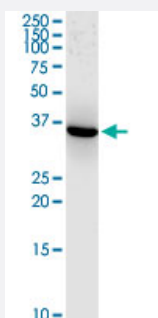


# AKR1C1 monoclonal antibody (M01), clone 1B3

Catalog # H00001645-M01

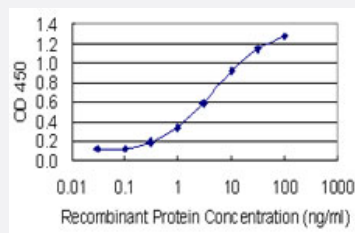
Size 100 ug

## Applications



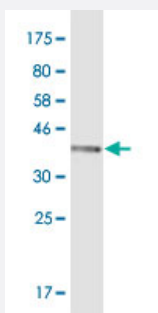
### Western Blot (Cell lysate)

AKR1C1 monoclonal antibody (M01), clone 1B3. Western Blot analysis of AKR1C1 expression in HeLa.



### Sandwich ELISA (Recombinant protein)

Detection limit for recombinant GST tagged AKR1C1 is 0.1 ng/ml as a capture antibody.



Western Blot detection against Immunogen (37.84 kDa) .

## Specification

### Product Description

Mouse monoclonal antibody raised against a partial recombinant AKR1C1.

|                                      |   |
|--------------------------------------|---|
| <b>Immunogen</b>                     | AKR1C1 (AAH20216, 1 a.a. ~ 110 a.a) partial recombinant protein with GST tag. MW of the GST tag alone is 26 KDa.  |
| <b>Sequence</b>                      | MDSKYQCVKLNDGHFMPVLGFGTYAPAEVPSKALEATKLAIEAGFRHIDSAHLYNNEEQVGLAIR<br>SKIADGSVKREDIFYTSKLWCNSHRPELVRPALERSLKNLQLDY |
| <b>Host</b>                          | Mouse   |
| <b>Reactivity</b>                    | Human   |
| <b>Interspecies Antigen Sequence</b> | Mouse (70); Rat (71)  |
| <b>Isotype</b>                       | IgG2a Kappa   |
| <b>Quality Control Testing</b>       | Antibody Reactive Against Recombinant Protein.<br>Western Blot detection against Immunogen (37.84 KDa) .          |
| <b>Storage Buffer</b>                | In 1x PBS, pH 7.4   |
| <b>Storage Instruction</b>           | Store at -20°C or lower. Aliquot to avoid repeated freezing and thawing.  |

## Applications

- Western Blot (Cell lysate)

AKR1C1 monoclonal antibody (M01), clone 1B3. Western Blot analysis of AKR1C1 expression in HeLa.

[Protocol Download](#)

- Western Blot (Recombinant protein)

[Protocol Download](#)

- Sandwich ELISA (Recombinant protein)

Detection limit for recombinant GST tagged AKR1C1 is 0.1 ng/ml as a capture antibody.

[Protocol Download](#)

- ELISA

## Gene Info — AKR1C1

Entrez GeneID [1645](#)

|                     |  |
|---------------------|--|
| GeneBank Accession# | <a href="#">BC020216</a>   |
| Protein Accession#  | <a href="#">AAH20216</a>   |
| Gene Name           | AKR1C1   |
| Gene Alias          | 2-ALPHA-HSD, 20-ALPHA-HSD, C9, DD1, DDH, DDH1, H-37, HAKRC, MBAB, MGC8954  |
| Gene Description    | aldo-keto reductase family 1, member C1 (dihydrodiol dehydrogenase 1; 20-alpha (3-alpha)-hydroxysteroid dehydrogenase)   |
| Omim ID             | <a href="#">600449</a>   |
| Gene Ontology       | <a href="#">Hyperlink</a>  |
| Gene Summary        | This gene encodes a member of the aldo/keto reductase superfamily, which consists of more than 40 known enzymes and proteins. These enzymes catalyze the conversion of aldehydes and ketones to their corresponding alcohols by utilizing NADH and/or NADPH as cofactors. The enzymes display overlapping but distinct substrate specificity. This enzyme catalyzes the reaction of progesterone to the inactive form 20-alpha-hydroxy-progesterone. This gene shares high sequence identity with three other gene members and is clustered with those three genes at chromosome 10p15-p14. [provided by RefSeq] |
| Other Designations  | 20 alpha-hydroxysteroid dehydrogenase OTTHUMP00000018992 aldo-keto reductase C aldo-keto reductase family 1, member C1 chlordecone reductase homolog dihydrodiol dehydrogenase 1 dihydrodiol dehydrogenase isoform DD1 hepatic dihydrodiol dehydrogenase trans-  |

## Pathway

- [Metabolism of xenobiotics by cytochrome P450](#)

## Disease

- [Alzheimer Disease](#)
- [Breast Neoplasms](#)
- [Genetic Predisposition to Disease](#)
- [Lung Neoplasms](#)
- [Lymphoma](#)