

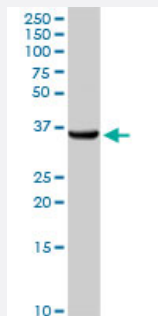
MaxPab®

# AKR1C1 purified MaxPab rabbit polyclonal antibody (D01P)

Catalog # H00001645-D01P

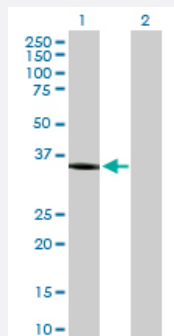
Size 100 ug

## Applications



### Western Blot (Tissue lysate)

AKR1C1 MaxPab rabbit polyclonal antibody. Western Blot analysis of AKR1C1 expression in human liver.



### Western Blot (Transfected lysate)

Western Blot analysis of AKR1C1 expression in transfected 293T cell line ([H00001645-T02](#)) by AKR1C1 MaxPab polyclonal antibody.

Lane 1: AKR1C1 transfected lysate(36.80 KDa).

Lane 2: Non-transfected lysate.

## Specification

### Product Description

Rabbit polyclonal antibody raised against a full-length human AKR1C1 protein.

### Immunogen

AKR1C1 (NP\_001344.2, 1 a.a. ~ 323 a.a) full-length human protein.

### Sequence

MDSKYQCVKLNLDGHFMPVLGFGTYAPAEVPKSKALEATKLAIEAGFRHIDSAHLYNNEEQVGLAIR  
SKIADGSVKREDIFYTSKLWCNSHRPELVRLPALERSLKNLQLDYVDLYLIHFPVSVKPGEEVIPKDE  
NGKILFDTVDLCATWEAVEKCKDAGLAKSIGVSNFNRRQLEMILNKPGLKYKPVCNQVECHPYFN  
QRKLLDFCKSKDMLVAYSALGSHREEPWDPNSPVLLEDPVLCALAKKHKRTPALIALRYQLQR  
GVVVLAKSYNEQRIRQNVQVFEFQLTSEEMKIDGLNRNVRYLTLDIFAGPPNYPFSDEY

### Host

Rabbit

Reactivity	Human
Interspecies Antigen Sequence	Mouse (73); Rat (70)
Quality Control Testing	Antibody reactive against mammalian transfected lysate.
Storage Buffer	In 1x PBS, pH 7.4
Storage Instruction	Store at -20°C or lower. Aliquot to avoid repeated freezing and thawing.

## Applications

- Western Blot (Tissue lysate)

AKR1C1 MaxPab rabbit polyclonal antibody. Western Blot analysis of AKR1C1 expression in human liver.

[Protocol Download](#)

- Western Blot (Transfected lysate)

Western Blot analysis of AKR1C1 expression in transfected 293T cell line ([H00001645-T02](#)) by AKR1C1 MaxPab polyclonal antibody.

Lane 1: AKR1C1 transfected lysate(36.80 KDa).

Lane 2: Non-transfected lysate.

[Protocol Download](#)

## Gene Info — AKR1C1

Entrez GeneID	<a href="#">1645</a>
GeneBank Accession#	<a href="#">NM_001353.5</a>
Protein Accession#	<a href="#">NP_001344.2</a>
Gene Name	AKR1C1
Gene Alias	2-ALPHA-HSD, 20-ALPHA-HSD, C9, DD1, DDH, DDH1, H-37, HAKRC, MBAB, MGC8954
Gene Description	aldo-keto reductase family 1, member C1 (dihydrodiol dehydrogenase 1; 20-alpha (3-alpha)-hydr oxysteroid dehydrogenase)
Omim ID	<a href="#">600449</a>
Gene Ontology	<a href="#">Hyperlink</a>

**Gene Summary**

This gene encodes a member of the aldo/keto reductase superfamily, which consists of more than 40 known enzymes and proteins. These enzymes catalyze the conversion of aldehydes and ketones to their corresponding alcohols by utilizing NADH and/or NADPH as cofactors. The enzymes display overlapping but distinct substrate specificity. This enzyme catalyzes the reaction of progesterone to the inactive form 20-alpha-hydroxy-progesterone. This gene shares high sequence identity with three other gene members and is clustered with those three genes at chromosome 10p15-p14. [provided by RefSeq]

**Other Designations**

20 alpha-hydroxysteroid dehydrogenase|OTTHUMP00000018992|aldo-keto reductase C|aldo-keto reductase family 1, member C1|chlordecone reductase homolog|dihydrodiol dehydrogenase 1|dihydrodiol dehydrogenase isoform DD1|hepatic dihydrodiol dehydrogenase|trans-

**Pathway**

- [Metabolism of xenobiotics by cytochrome P450](#)

**Disease**

- [Alzheimer Disease](#)
- [Breast Neoplasms](#)
- [Genetic Predisposition to Disease](#)
- [Lung Neoplasms](#)
- [Lymphoma](#)