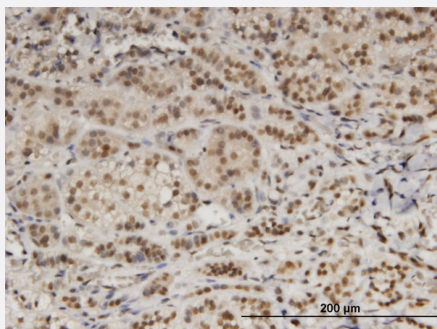


# DDB1 monoclonal antibody (M01), clone 4C5

Catalog # H00001642-M01

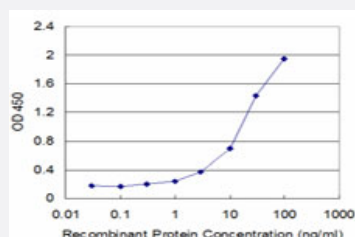
Size 100 ug

## Applications



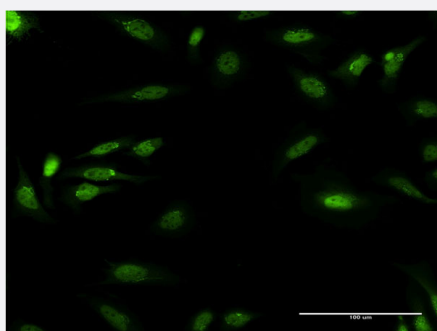
### Immunohistochemistry (Formalin/PFA-fixed paraffin-embedded sections)

Immunoperoxidase of monoclonal antibody to DDB1 on formalin-fixed paraffin-embedded human adrenal gland. [antibody concentration 3 ug/ml]



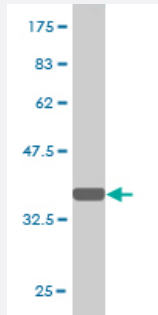
### Sandwich ELISA (Recombinant protein)

Detection limit for recombinant GST tagged DDB1 is approximately 0.3ng/ml as a capture antibody.



### Immunofluorescence

Immunofluorescence of monoclonal antibody to DDB1 on HeLa cell . [antibody concentration 10 ug/ml]



Western Blot detection against Immunogen (36.41 KDa) .

## Specification

<b>Product Description</b>	Mouse monoclonal antibody raised against a partial recombinant DDB1.
<b>Immunogen</b>	DDB1 (NP_001914, 1044 a.a. ~ 1140 a.a) partial recombinant protein with GST tag. MW of the GST tag alone is 26 KDa.
<b>Sequence</b>	SESWYNLLLDMQNRLNKKVSVGKIEHSFWRSFHTERKTEPATGFIDGDLIESFLDISRPKMQEVV ANLQYDDGSGMKREATADDLIKVVEELTRIH
<b>Host</b>	Mouse
<b>Reactivity</b>	Human
<b>Interspecies Antigen Sequence</b>	Mouse (100); Rat (100)
<b>Isotype</b>	IgG2a Kappa
<b>Quality Control Testing</b>	Antibody Reactive Against Recombinant Protein. Western Blot detection against Immunogen (36.41 KDa) .
<b>Storage Buffer</b>	In 1x PBS, pH 7.4
<b>Storage Instruction</b>	Store at -20°C or lower. Aliquot to avoid repeated freezing and thawing.

## Applications

- Western Blot (Recombinant protein)

[Protocol Download](#)

- Immunohistochemistry (Formalin/PFA-fixed paraffin-embedded sections)

Immunoperoxidase of monoclonal antibody to DDB1 on formalin-fixed paraffin-embedded human adrenal gland. [antibody concentration 3 ug/ml]

[Protocol Download](#)

- Sandwich ELISA (Recombinant protein)

Detection limit for recombinant GST tagged DDB1 is approximately 0.3ng/ml as a capture antibody.

[Protocol Download](#)

- ELISA

- Immunofluorescence

Immunofluorescence of monoclonal antibody to DDB1 on HeLa cell . [antibody concentration 10 ug/ml]

## Gene Info — DDB1

Entrez GeneID [1642](#)

GeneBank Accession# [NM\\_001923](#)

Protein Accession# [NP\\_001914](#)

Gene Name DDB1

Gene Alias DDBA, UV-DDB1, XAP1, XPCE, XPE, XPE-BF

Gene Description damage-specific DNA binding protein 1, 127kDa

Omim ID [600045](#)

Gene Ontology [Hyperlink](#)

**Gene Summary** This gene encodes the large subunit of DNA damage-binding protein which is a heterodimer composed of a large and a small subunit. This protein functions in nucleotide-excision repair. Its defective activity causes the repair defect in the patients with xeroderma pigmentosum complementation group E (XPE). However, it remains for mutation analysis to demonstrate whether the defect in XPE patients is in this gene or the gene encoding the small subunit. In addition, Best vitelliform macular dystrophy is mapped to the same region as this gene on 11q, but no sequence alternations of this gene are demonstrated in Best disease patients. [provided by RefSeq]

**Other Designations** DDB p127 subunit|damage-specific DNA binding protein 1|damage-specific DNA binding protein 1 (127kD)

## Pathway

- [Nucleotide excision repair](#)
- [Ubiquitin mediated proteolysis](#)