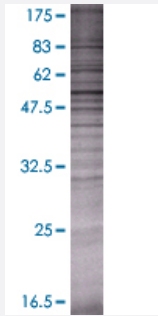


# DBT 293T Cell Transient Overexpression Lysate(Denatured)

Catalog # H00001629-T01

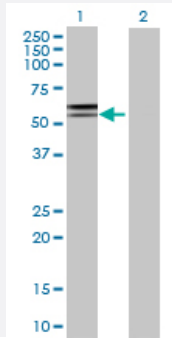
Size 100 uL

## Applications



### SDS-PAGE Gel

DBT transfected lysate.



### Western Blot

Lane 1: DBT transfected lysate ( 53.13 KDa)

Lane 2: Non-transfected lysate.

## Specification

Transfected Cell Line	293T
Plasmid	pCMV-DBT full-length
Host	Human
Theoretical MW (kDa)	53.13
Interspecies Antigen Sequence	Mouse (88); Rat (88)

## Quality Control Testing

Transient overexpression cell lysate was tested with Anti-DBT antibody ([H00001629-B01](#)) by Western Blots.  
 SDS-PAGE Gel  
 DBT transfected lysate.  
 Western Blot  
 Lane 1: DBT transfected lysate ( 53.13 KDa)  
 Lane 2: Non-transfected lysate.

## Storage Buffer

1X Sample Buffer (50 mM Tris-HCl, 2% SDS, 10% glycerol, 300 mM 2-mercaptoethanol, 0.01% Bromophenol blue)

## Storage Instruction

Store at -80°C. Aliquot to avoid repeated freezing and thawing.

## Applications

- Western Blot

## Gene Info — DBT

### Entrez GeneID

[1629](#)

### GeneBank Accession#

[BC016675.1](#)

### Protein Accession#

[AAH16675.1](#)

### Gene Name

DBT

### Gene Alias

BCATE2, E2, E2B, MGC9061

### Gene Description

dihydrolipoamide branched chain transacylase E2

### Omim ID

[248600](#) [248610](#)

### Gene Ontology

[Hyperlink](#)

### Gene Summary

The branched-chain alpha-keto acid dehydrogenase complex (BCKD) is an inner-mitochondrial enzyme complex involved in the breakdown of the branched-chain amino acids isoleucine, leucine, and valine. The BCKD complex is thought to be composed of a core of 24 transacylase (E2) subunits, and associated decarboxylase (E1), dehydrogenase (E3), and regulatory subunits. This gene encodes the transacylase (E2) subunit. Mutations in this gene result in maple syrup urine disease, type 2. Alternatively spliced transcript variants have been described, but their biological validity has not been determined. [provided by RefSeq]

### Other Designations

BCKAD E2 subunit|E2 component of branched chain alpha-keto acid dehydrogenase complex|O TTHUMP00000012596|branched chain acyltransferase, E2 component|dihydrolipoamide branched chain transacylase|dihydrolipoyl transacylase|dihydrolipoyllysine-residue (2-me

## Pathway

- [Metabolic pathways](#)
- [Valine](#)