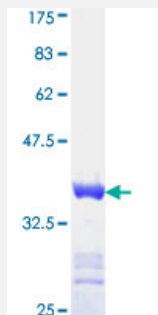


# DBC1 (Human) Recombinant Protein (Q01)

Catalog # H00001620-Q01

Size 25 ug, 10 ug

## Applications



## Specification

<b>Product Description</b>	Human DBC1 partial ORF ( NP_055433, 662 a.a. - 761 a.a.) recombinant protein with GST-tag at N-terminal.
<b>Sequence</b>	LRFNADLLRSAVQQVNQSYTQGGQFYSSSSVMLLLDIRDRINRLAPPVAPGKPQLDLFSCMLKH RLKLTNSEIIRVNHALDLYNTEILKQSDQMTAKLC
<b>Host</b>	Wheat Germ (in vitro)
<b>Theoretical MW (kDa)</b>	36.74
<b>Preparation Method</b>	<a href="#">in vitro wheat germ expression system</a>
<b>Purification</b>	Glutathione Sepharose 4 Fast Flow
<b>Quality Control Testing</b>	12.5% SDS-PAGE Stained with Coomassie Blue.
<b>Storage Buffer</b>	50 mM Tris-HCl, 10 mM reduced Glutathione, pH=8.0 in the elution buffer.
<b>Storage Instruction</b>	Store at -80°C. Aliquot to avoid repeated freezing and thawing.
<b>Note</b>	Best use within three months from the date of receipt of this protein.

## Applications

- Enzyme-linked Immunoabsorbent Assay
- Western Blot (Recombinant protein)
- Antibody Production
- Protein Array

## Gene Info — DBC1

Entrez GeneID	<a href="#">1620</a>
GeneBank Accession#	<a href="#">NM_014618</a>
Protein Accession#	<a href="#">NP_055433</a>
Gene Name	DBC1
Gene Alias	DBCCR1, FAM5A
Gene Description	deleted in bladder cancer 1
Omim ID	<a href="#">602865</a>
Gene Ontology	<a href="#">Hyperlink</a>
Gene Summary	This gene is located within a chromosomal region that shows loss of heterozygosity in some bladder cancers. It contains a 5' CpG island that may be a frequent target of hypermethylation, and it may undergo hypermethylation-based silencing in some bladder cancers. [provided by RefSeq]
Other Designations	OTTHUMP00000022751 bA574M5.1 (deleted in bladder cancer chromosome region candidate 1 (IB3089A)) deleted in bladder cancer chromosome region candidate 1

## Disease

- [Genetic Predisposition to Disease](#)
- [Multiple Sclerosis](#)
- [Tobacco Use Disorder](#)