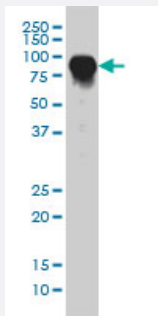


DAF monoclonal antibody (M01), clone 1G3

Catalog # H00001604-M01

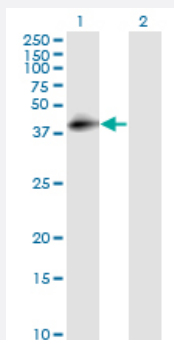
Size 100 ug

Applications



Western Blot (Cell lysate)

DAF monoclonal antibody (M01), clone 1G3 Western Blot analysis of DAF expression in HeLa (Cat # L013V1).

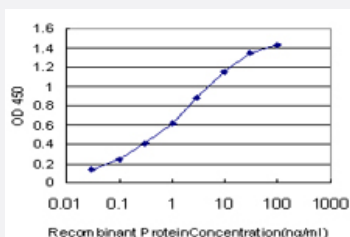


Western Blot (Transfected lysate)

Western Blot analysis of CD55 expression in transfected 293T cell line by DAF monoclonal antibody (M01), clone 1G3.

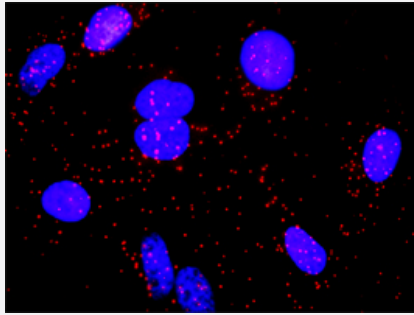
Lane 1: CD55 transfected lysate(41.4 KDa).

Lane 2: Non-transfected lysate.



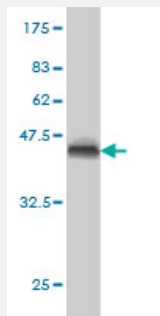
Sandwich ELISA (Recombinant protein)

Detection limit for recombinant GST tagged DAF is approximately 0.03ng/ml as a capture antibody.



In situ Proximity Ligation Assay (Cell)

Proximity Ligation Analysis of protein-protein interactions between LCK and CD55. HeLa cells were stained with anti-LCK rabbit purified polyclonal 1:1200 and anti-CD55 mouse monoclonal antibody 1:50. Each red dot represents the detection of protein-protein interaction complex, and nuclei were counterstained with DAPI (blue).



Western Blot detection against Immunogen (36.74 KDa) .

Specification

Product Description	Mouse monoclonal antibody raised against a partial recombinant DAF.
Immunogen	DAF (NP_000565, 35 a.a. ~ 134 a.a) partial recombinant protein with GST tag. MW of the GST tag alone is 26 KDa.
Sequence	DCGLPPDVPNAQPALEGRTSFPEDTVITYKCEESFVKIPGEKDSVICLRGSQWSDIEEFCNRSCE VPTRLNSASLKQPYITQNYFPVGTVEYECRPGYR
Host	Mouse
Reactivity	Human
Isotype	IgG1 Kappa
Quality Control Testing	Antibody Reactive Against Recombinant Protein. Western Blot detection against Immunogen (36.74 KDa) .
Storage Buffer	In 1x PBS, pH 7.4
Storage Instruction	Store at -20°C or lower. Aliquot to avoid repeated freezing and thawing.

Applications

- Western Blot (Cell lysate)

DAF monoclonal antibody (M01), clone 1G3 Western Blot analysis of DAF expression in HeLa (Cat # L013V1).

[Protocol Download](#)

- Western Blot (Transfected lysate)

Western Blot analysis of CD55 expression in transfected 293T cell line by DAF monoclonal antibody (M01), clone 1G3.

Lane 1: CD55 transfected lysate(41.4 KDa).

Lane 2: Non-transfected lysate.

[Protocol Download](#)

- Western Blot (Recombinant protein)

[Protocol Download](#)

- Sandwich ELISA (Recombinant protein)

Detection limit for recombinant GST tagged DAF is approximately 0.03ng/ml as a capture antibody.

[Protocol Download](#)

- ELISA

- In situ* Proximity Ligation Assay (Cell)

Proximity Ligation Analysis of protein-protein interactions between LCK and CD55. HeLa cells were stained with anti-LCK rabbit purified polyclonal 1:1200 and anti-CD55 mouse monoclonal antibody 1:50. Each red dot represents the detection of protein-protein interaction complex, and nuclei were counterstained with DAPI (blue).

Gene Info — CD55

Entrez GeneID [1604](#)

GeneBank Accession# [NM_000574](#)

Protein Accession# [NP_000565](#)

Gene Name CD55

Gene Alias CR, CROM, DAF, TC

Gene Description CD55 molecule, decay accelerating factor for complement (Cromer blood group)

Omim ID [125240](#)

Gene Ontology

[Hyperlink](#)

Gene Summary

This gene encodes a protein involved in the regulation of the complement cascade. The encoded glycoprotein is also known as the decay-accelerating factor (DAF); binding of DAF to complement proteins accelerates their decay, disrupting the cascade and preventing damage to host cells. Antigens present on the DAF glycoprotein constitute the Cromer blood group system (CROM). Two alternatively spliced transcripts encoding different proteins have been identified. The predominant transcript encodes a membrane-bound protein expressed on cells exposed to plasma component proteins but an alternatively spliced transcript produces a soluble protein present at much lower levels. Additional, alternatively spliced transcript variants have been described, but their biological validity has not been determined. [provided by RefSeq]

Other Designations

CD55 antigen|decay accelerating factor for complement

Publication Reference

- [A novel form of Total Internal Reflection Fluorescence Microscopy \(LG-TIRFM\) reveals different and independent lipid raft domains in living cells.](#)

Asanov A, Zepeda A, Vaca L.

Biochimica et Biophysica Acta 2010 Feb; 1801(2):147.

Application: FME, Human, HEK 293T cells

Pathway

- [Complement and coagulation cascades](#)
- [Hematopoietic cell lineage](#)

Disease

- [Asthma](#)
- [Birth Weight](#)
- [Chorioamnionitis](#)
- [Down Syndrome](#)
- [Fetal Membranes](#)
- [Genetic Predisposition to Disease](#)
- [Glioblastoma](#)

- [Glioma](#)
- [Leukemia](#)
- [Lymphoma](#)
- [Macular Degeneration](#)
- [Meningeal Neoplasms](#)
- [Meningioma](#)
- [Obstetric Labor](#)
- [Pre-Eclampsia](#)
- [Premature Birth](#)
- [Rhinitis](#)