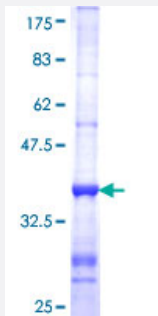


CYP2C18 (Human) Recombinant Protein (Q01)

Catalog # H00001562-Q01

Size 25 ug, 10 ug

Applications



Specification

Product Description	Human CYP2C18 partial ORF (NP_000763, 200 a.a. - 299 a.a.) recombinant protein with GST-tag at N-terminal.
Sequence	KFNENLRILSSPWIQVCNNFPALIDYLPGSHNKIAENFAYIKSYVLRIKEHQESLDMNSARDFIDCF LIKMEQEKHNNQQSEFTVESLIATVTDMFGAGT
Host	Wheat Germ (in vitro)
Theoretical MW (kDa)	36.74
Interspecies Antigen Sequence	Mouse (71); Rat (71)
Preparation Method	in vitro wheat germ expression system
Purification	Glutathione Sepharose 4 Fast Flow
Quality Control Testing	12.5% SDS-PAGE Stained with Coomassie Blue.
Storage Buffer	50 mM Tris-HCl, 10 mM reduced Glutathione, pH=8.0 in the elution buffer.
Storage Instruction	Store at -80°C. Aliquot to avoid repeated freezing and thawing.
Note	Best use within three months from the date of receipt of this protein.

Applications

- Enzyme-linked Immunoabsorbent Assay
- Western Blot (Recombinant protein)
- Antibody Production
- Protein Array

Gene Info — CYP2C18

Entrez GeneID [1562](#)

GeneBank Accession# [NM_000772](#)

Protein Accession# [NP_000763](#)

Gene Name CYP2C18

Gene Alias CPCI, CYP2C, CYP2C17, DKFZp686I24235, P450-6B/29C, P450IIC17

Gene Description cytochrome P450, family 2, subfamily C, polypeptide 18

Omim ID [601131](#)

Gene Ontology [Hyperlink](#)

Gene Summary This gene encodes a member of the cytochrome P450 superfamily of enzymes. The cytochrome P450 proteins are monooxygenases which catalyze many reactions involved in drug metabolism and synthesis of cholesterol, steroids and other lipids. This protein localizes to the endoplasmic reticulum but its specific substrate has not yet been determined. The gene is located within a cluster of cytochrome P450 genes on chromosome 10q24. An additional gene, CYP2C17, was once thought to exist; however, CYP2C17 is now considered an artefact based on a chimera of CYP2C18 and CYP2C19. Alternatively spliced transcript variants encoding different isoforms have been found for this gene. [provided by RefSeq]

Other Designations (S)-mephenytoin hydroxylase associated cytochrome P450|OTTHUMP00000020131|cytochrome P450 family 2 subfamily C polypeptide 18|cytochrome P450, subfamily IIC (mephenytoin 4-hydroxylase), polypeptide 17|cytochrome P450, subfamily IIC (mephenytoin 4-hydroxyl

Pathway

- [Arachidonic acid metabolism](#)
- [Drug metabolism - cytochrome P450](#)
- [Linoleic acid metabolism](#)
- [Metabolic pathways](#)
- [Metabolism of xenobiotics by cytochrome P450](#)
- [Retinol metabolism](#)

Disease

- [Adenocarcinoma](#)
- [Alzheimer disease](#)
- [Cerebral Amyloid Angiopathy](#)
- [Coronary Artery Disease](#)
- [Esophageal Neoplasms](#)
- [Genetic Predisposition to Disease](#)
- [Genomic Instability](#)
- [Kidney Failure](#)
- [Mesothelioma](#)
- [Neuroblastoma](#)
- [Pleural Neoplasms](#)