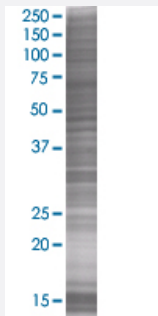


CTSZ 293T Cell Transient Overexpression Lysate(Denatured)

Catalog # H00001522-T01

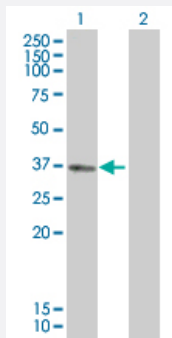
Size 100 uL

Applications



SDS-PAGE Gel

CTSZ transfected lysate



Western Blot

Lane 1: CTSZ transfected lysate (33.33 KDa).

Lane 2: Non-transfected lysate.

Specification

Transfected Cell Line	293T
Plasmid	pCMV-CTSZ full-length
Host	Human
Theoretical MW (kDa)	33.33
Interspecies Antigen Sequence	Mouse (86); Rat (87)

Quality Control Testing

Transient overexpression cell lysate was tested with Anti-CTSZ antibody ([H00001522-B01](#)) by Western Blots.
 SDS-PAGE Gel
 CTSZ transfected lysate
 Western Blot
 Lane 1: CTSZ transfected lysate (33.33 KDa).
 Lane 2: Non-transfected lysate.

Storage Buffer

1X Sample Buffer (50 mM Tris-HCl, 2% SDS, 10% glycerol, 300 mM 2-mercaptoethanol, 0.01% Bromophenol blue)

Storage Instruction

Store at -80°C. Aliquot to avoid repeated freezing and thawing.

Applications

- Western Blot

Gene Info — CTSZ

Entrez GeneID

[1522](#)

GeneBank Accession#

[NM_001336](#)

Protein Accession#

[NP_001327](#)

Gene Name

CTSZ

Gene Alias

CTSX, FLJ17088

Gene Description

cathepsin Z

Omim ID

[603169](#)

Gene Ontology

[Hyperlink](#)

Gene Summary

The protein encoded by this gene is a lysosomal cysteine proteinase and member of the peptidase C1 family. It exhibits both carboxy-monopeptidase and carboxy-dipeptidase activities. The encoded protein has also been known as cathepsin X and cathepsin P. This gene is expressed ubiquitously in cancer cell lines and primary tumors and, like other members of this family, may be involved in tumorigenesis. [provided by RefSeq]

Other Designations

OTTHUMP00000031409|cathepsin X|preprocathepsin P

Pathway

- [Lysosome](#)

Disease

- [Alzheimer disease](#)
- [Cognition](#)
- [Genetic Predisposition to Disease](#)
- [Tuberculosis](#)