

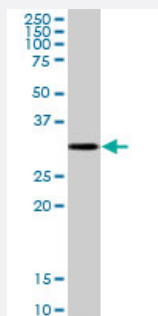
MaxPab®

# CTSZ purified MaxPab mouse polyclonal antibody (B01P)

Catalog # H00001522-B01P

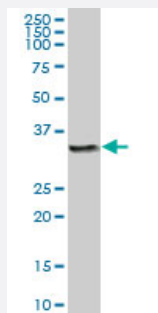
Size 50 ug

## Applications



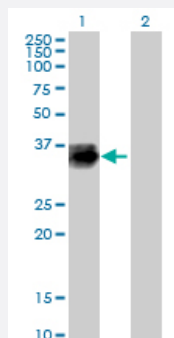
### Western Blot (Tissue lysate)

CTSZ MaxPab polyclonal antibody. Western Blot analysis of CTSZ expression in human liver.



### Western Blot (Tissue lysate)

CTSZ MaxPab polyclonal antibody. Western Blot analysis of CTSZ expression in human placenta.



### Western Blot (Transfected lysate)

Western Blot analysis of CTSZ expression in transfected 293T cell line ([H00001522-T01](#)) by CTSZ MaxPab polyclonal antibody.

Lane 1: CTSZ transfected lysate(33.33 KDa).

Lane 2: Non-transfected lysate.

## Specification

### Product Description

Mouse polyclonal antibody raised against a full-length human CTSZ protein.

Immunogen	CTSZ (NP_001327.2, 1 a.a. ~ 303 a.a) full-length human protein.
Sequence	MARRGPGWRPLLLLVLLAGAAQGGLYFRRGQTCYRPLRGDGLAPLGRSTYPRPHEYLSPADLPK SWDWRNVDGVNYASITRNQHIPPQYCGSCWAHASTSAMADRINIKRGAWPSTLLSVQNVIDCGN AGSCEGGNDLSVWDYAHQHGPDETCNNYQAKDQECDKFNQCCTCNEFKECHAIRNYTLWRVG DYGSLSGREKMMAEIYANGPISCGIMATERLANYTGGIYAEYQDTTYINHVVSVAGWGISDGTEYWIV RNSWGEPWGERGWLRIVTSTYKDGKGARYNLAIEEHCTFGDPV
Host	Mouse
Reactivity	Human
Interspecies Antigen Sequence	Mouse (86); Rat (87)
Quality Control Testing	Antibody reactive against mammalian transfected lysate.
Storage Buffer	In 1x PBS, pH 7.4
Storage Instruction	Store at -20°C or lower. Aliquot to avoid repeated freezing and thawing.

## Applications

- Western Blot (Tissue lysate)

CTSZ MaxPab polyclonal antibody. Western Blot analysis of CTSZ expression in human liver.

[Protocol Download](#)

- Western Blot (Tissue lysate)

CTSZ MaxPab polyclonal antibody. Western Blot analysis of CTSZ expression in human placenta.

[Protocol Download](#)

- Western Blot (Transfected lysate)

Western Blot analysis of CTSZ expression in transfected 293T cell line ([H00001522-T01](#)) by CTSZ MaxPab polyclonal antibody.

Lane 1: CTSZ transfected lysate(33.33 KDa).

Lane 2: Non-transfected lysate.

[Protocol Download](#)

## Gene Info — CTSZ

Entrez GeneID [1522](#)

GeneBank Accession#	<a href="#">NM_001336.2</a>
Protein Accession#	<a href="#">NP_001327.2</a>
Gene Name	CTSZ
Gene Alias	CTSX, FLJ17088
Gene Description	cathepsin Z
Omim ID	<a href="#">603169</a>
Gene Ontology	<a href="#">Hyperlink</a>
Gene Summary	The protein encoded by this gene is a lysosomal cysteine proteinase and member of the peptidase C1 family. It exhibits both carboxy-monopeptidase and carboxy-dipeptidase activities. The encoded protein has also been known as cathepsin X and cathepsin P. This gene is expressed ubiquitously in cancer cell lines and primary tumors and, like other members of this family, may be involved in tumorigenesis. [provided by RefSeq]
Other Designations	OTTHUMP00000031409 cathepsin X preprocathepsin P

## Pathway

- [Lysosome](#)

## Disease

- [Alzheimer disease](#)
- [Cognition](#)
- [Genetic Predisposition to Disease](#)
- [Tuberculosis](#)