

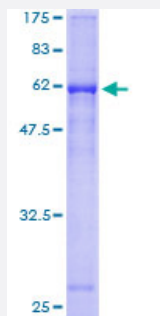
Full-Length

CTSW (Human) Recombinant Protein (P01)

Catalog # H00001521-P01

Size 25 ug, 10 ug

Applications



Specification

Product Description

Human CTSW full-length ORF (AAH48255, 22 a.a. - 376 a.a.) recombinant protein with GST-tag at N-terminal.

Sequence

IRGPLRAQDLGPQPLELKEAFKLFQIQFNRSYLSPEEHAHRLDIFAHNLAQAQRLQEEDLGTAIEFG
VTPFSDLTEEEFGQLYGYRRAAGGVPSMGREIRSEEPEESVPFSCDWRKVAGASPIKDQKNCN
CCWAMAAAAGNIETLWRISFWDVSVQELLDGRCGDGCHGGFVWDAFITVLNNSGLASEKD
YPFQGKVRAHRCHPKKYQKVAWIQDFIMLQNEHRIAQYLATYGPIVTINMKPLQLYRKGVIKATPT
TCDPQLVDHSVLLVGFSGSVKSEEGWAETVSSQSQPQPPHPTPYWILKNSWGAQWGEKGYFRL
HRGSNTCGITKFPLTARVQKPDMKPRVSCPP

Host

Wheat Germ (in vitro)

Theoretical MW (kDa)

64.79

Interspecies Antigen Sequence

Mouse (69); Rat (71)

Preparation Method

[in vitro wheat germ expression system](#)

Purification

Glutathione Sepharose 4 Fast Flow

Quality Control Testing

12.5% SDS-PAGE Stained with Coomassie Blue.

Storage Buffer

50 mM Tris-HCl, 10 mM reduced Glutathione, pH=8.0 in the elution buffer.

Storage Instruction

Store at -80°C. Aliquot to avoid repeated freezing and thawing.

Note

Best use within three months from the date of receipt of this protein.

Applications

- Enzyme-linked Immunoabsorbent Assay
- Western Blot (Recombinant protein)
- Antibody Production
- Protein Array

Gene Info — CTSW

Entrez GeneID[1521](#)**GeneBank Accession#**[BC048255](#)**Protein Accession#**[AAH48255](#)**Gene Name**

CTSW

Gene Alias

LYPN

Gene Description

cathepsin W

Omim ID[602364](#)**Gene Ontology**[Hyperlink](#)**Gene Summary**

The protein encoded by this gene, a member of the peptidase C1 family, is a cysteine proteinase that may have a specific function in the mechanism or regulation of T-cell cytolytic activity. The encoded protein is found associated with the membrane inside the endoplasmic reticulum of natural killer and cytotoxic T-cells. Expression of this gene is up-regulated by interleukin-2. [provided by RefSeq]

Other Designations

lymphopain

Pathway

- [Lysosome](#)