

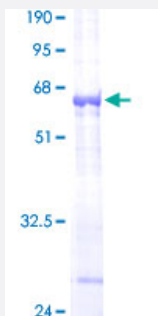
Full-Length

CTSO (Human) Recombinant Protein (P01)

Catalog # H00001519-P01

Size 25 ug, 10 ug

Applications



Specification

Product Description

Human CTSO full-length ORF (AAH49206, 24 a.a. - 321 a.a.) recombinant protein with GST-tag at N-terminal.

Sequence

DSRAPFTPTWPRSREREEAAAFRESLNRHRYLNSLFPSSENSTAFYGINQFSYLFPEEFKAYLRSKP
SKFPRYSAEVHMSIPNVSLPLRFDWRDKQVVTQVRNQMCGGCWAFSVVGAVESAYAIGKGPL
EDLSVQQVIDCSYNNYGCNGGSTLNALNWLNMQVKLVKDSEYPFKAQNGLCHYFSGSHSGFSI
KGYSAYDFSDQEDEMAKALLTFGPLVVMDAVSWQDYLGGIIQHHCSSGEANHAVLITGFDKTGST
PYWIVRNSWGSSWGVDGYAHVKMGSNVCGIADSVSSIFV

Host

Wheat Germ (in vitro)

Theoretical MW (kDa)

58.52

Interspecies Antigen Sequence

Mouse (77)

Preparation Method

[in vitro wheat germ expression system](#)

Purification

Glutathione Sepharose 4 Fast Flow

Quality Control Testing

12.5% SDS-PAGE Stained with Coomassie Blue.

Storage Buffer

50 mM Tris-HCl, 10 mM reduced Glutathione, pH=8.0 in the elution buffer.

Storage Instruction

Store at -80°C. Aliquot to avoid repeated freezing and thawing.

Note

Best use within three months from the date of receipt of this protein.

Applications

- Enzyme-linked Immunoabsorbent Assay
- Western Blot (Recombinant protein)
- Antibody Production
- Protein Array

Gene Info — CTSO

Entrez GeneID[1519](#)**GeneBank Accession#**[BC049206](#)**Protein Accession#**[AAH49206](#)**Gene Name**

CTSO

Gene Alias

CTSO1

Gene Description

cathepsin O

Omim ID[600550](#)**Gene Ontology**[Hyperlink](#)**Gene Summary**

The protein encoded by the gene is a cysteine proteinase and a member of the papain superfamily. This proteolytic enzyme is involved in cellular protein degradation and turnover. The recombinant form of this enzyme was shown to degrade synthetic peptides typically used as substrates for cysteine proteinases and its proteolytic activity was abolished by an inhibitor of cyteine proteinase. [provided by RefSeq]

Other Designations

-

Pathway

- [Lysosome](#)