

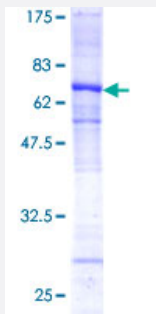
Full-Length

CTSL (Human) Recombinant Protein (P02)

Catalog # H00001514-P02

Size 25 ug, 10 ug

Applications



Specification

Product Description

Human CTSL full-length ORF (AAH12612.1, 18 a.a. - 333 a.a.) recombinant protein with GST-tag at N-terminal.

Sequence

TLTFDHSLEAQWTKWKAMHNRLYGMNEEGWRRVWEKNVKMIELHNQEYREGKHSFTMAMNA
FGDMTSEEFQRQVMNGFQNRKPRKGKVFQEPLFYAPRSVDWREKGYVTPVKNQGGCGSCWA
FSATGALEGQMFRKTGRLISLSEQLNVDCSGPQGNEGCNGGLMDYAFQYVQDNGGLDSEESYP
YEATEESCKYNPKYSVANDTGFVDIPKQEKALMKAVATVGPISVAIDAGHESFLFYKEGIYFEPDC
SSEDMDHGVLLVVG YGFESTESDNNKYWLKNSWGEEWGMGGYVKMAKDRRNHCGIASAASYP
TV

Host

Wheat Germ (in vitro)

Theoretical MW (kDa)

60.39

Preparation Method

[in vitro wheat germ expression system](#)

Purification

Glutathione Sepharose 4 Fast Flow

Quality Control Testing

12.5% SDS-PAGE Stained with Coomassie Blue.

Storage Buffer

50 mM Tris-HCl, 10 mM reduced Glutathione, pH=8.0 in the elution buffer.

Storage Instruction

Store at -80°C. Aliquot to avoid repeated freezing and thawing.

Note

Best use within three months from the date of receipt of this protein.

Applications

- Enzyme-linked Immunoabsorbent Assay
- Western Blot (Recombinant protein)
- Antibody Production
- Protein Array

Gene Info — CTSL1

Entrez GeneID [1514](#)

GeneBank Accession# [BC012612](#)

Protein Accession# [AAH12612.1](#)

Gene Name CTSL1

Gene Alias CATL, CTSL, FLJ31037, MEP

Gene Description cathepsin L1

Omim ID [116880](#)

Gene Ontology [Hyperlink](#)

Gene Summary

The protein encoded by this gene is a lysosomal cysteine proteinase that plays a major role in intracellular protein catabolism. Its substrates include collagen and elastin, as well as alpha-1 protease inhibitor, a major controlling element of neutrophil elastase activity. The encoded protein has been implicated in several pathologic processes, including myofibril necrosis in myopathies and in myocardial ischemia, and in the renal tubular response to proteinuria. This protein, which is a member of the peptidase C1 family, is a dimer composed of disulfide-linked heavy and light chains, both produced from a single protein precursor. At least two transcript variants encoding the same protein have been found for this gene. [provided by RefSeq]

Other Designations OTTHUMP00000021601|OTTHUMP00000021602|OTTHUMP00000063566|cathepsin L|major excreted protein

Pathway

- [Antigen processing and presentation](#)
- [Lysosome](#)