

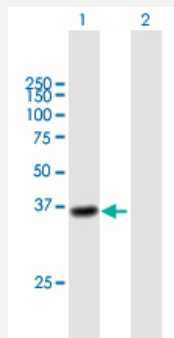
MaxPab®

CTSL1 purified MaxPab mouse polyclonal antibody (B01P)

Catalog # H00001514-B01P

Size 50 ug

Applications



Western Blot (Transfected lysate)

Western Blot analysis of CTSL1 expression in transfected 293T cell line ([H00135250-T02](#)) by CTSL1 MaxPab polyclonal antibody.

Lane 1: CTSL1 transfected lysate(37.6 KDa).

Lane 2: Non-transfected lysate.

Specification

Product Description	Mouse polyclonal antibody raised against a full-length human CTSL1 protein.
Immunogen	CTSL1 (NP_001903.1, 1 a.a. ~ 333 a.a) full-length human protein.
Sequence	MNPTLILAAFLGLIASATLTFDHSLEAQWTKWKAMHNRLYGMNEEGWRRRAVWEKNMKMIELHNQ EYREGKHSFTMAMNAFGDMTSEEFQVMNGFQNRKPRKGKVFQEPLFYEAPRSVDWREKGYV TPVKNQGGQCGSCWAFSATGALEGQMFRKTGRLISLSEQNLVDCSGPQQNEGCNGLMDYAFQY VQDNGGLDSEESYPYEATEESCKYNPKYSVANDTGFDIPKQEKALMKAVATVGPISVAIDAGHE SFLFYKEGIYFEPDCSSDMDHGVLLVVGYGFEFSTSDNNKYWLVKNSWGEEWGMGGYVKMAK DRRNHCGIASAASYPTV
Host	Mouse
Reactivity	Human
Quality Control Testing	Antibody reactive against mammalian transfected lysate.
Storage Buffer	In 1x PBS, pH 7.4
Storage Instruction	Store at -20°C or lower. Aliquot to avoid repeated freezing and thawing.

Applications

- Western Blot (Transfected lysate)

Western Blot analysis of CTSL1 expression in transfected 293T cell line ([H00135250-T02](#)) by CTSL1 MaxPab polyclonal antibody.

Lane 1: CTSL1 transfected lysate(37.6 KDa).

Lane 2: Non-transfected lysate.

[Protocol Download](#)

Gene Info — CTSL1

Entrez GeneID [1514](#)

GeneBank Accession# [NM_001912.2](#)

Protein Accession# [NP_001903.1](#)

Gene Name CTSL1

Gene Alias CATL, CTSL, FLJ31037, MEP

Gene Description cathepsin L1

Omim ID [116880](#)

Gene Ontology [Hyperlink](#)

Gene Summary The protein encoded by this gene is a lysosomal cysteine proteinase that plays a major role in intracellular protein catabolism. Its substrates include collagen and elastin, as well as alpha-1 protease inhibitor, a major controlling element of neutrophil elastase activity. The encoded protein has been implicated in several pathologic processes, including myofibril necrosis in myopathies and in myocardial ischemia, and in the renal tubular response to proteinuria. This protein, which is a member of the peptidase C1 family, is a dimer composed of disulfide-linked heavy and light chains, both produced from a single protein precursor. At least two transcript variants encoding the same protein have been found for this gene. [provided by RefSeq]

Other Designations OTTHUMP00000021601|OTTHUMP00000021602|OTTHUMP00000063566|cathepsin L|major excreted protein

Pathway

- [Antigen processing and presentation](#)

- [Lysosome](#)