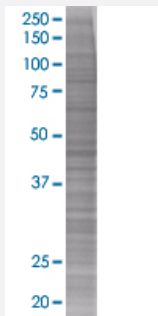


CTSE 293T Cell Transient Overexpression Lysate(Denatured)

Catalog # H00001510-T01

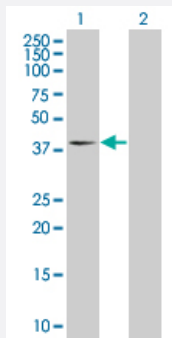
Size 100 uL

Applications



SDS-PAGE Gel

CTSE transfected lysate



Western Blot

Lane 1: CTSE transfected lysate (41.8 KDa).

Lane 2: Non-transfected lysate.

Specification

Transfected Cell Line	293T
Plasmid	pCMV-CTSE full-length
Host	Human
Theoretical MW (kDa)	41.8
Interspecies Antigen Sequence	Mouse (83); Rat (77)

Quality Control Testing

Transient overexpression cell lysate was tested with Anti-CTSE antibody ([H00001510-B01](#)) by Western Blots.
SDS-PAGE Gel
CTSE transfected lysate
Western Blot
Lane 1: CTSE transfected lysate (41.8 KDa).
Lane 2: Non-transfected lysate.

Storage Buffer

1X Sample Buffer (50 mM Tris-HCl, 2% SDS, 10% glycerol, 300 mM 2-mercaptoethanol, 0.01% Bromophenol blue)

Storage Instruction

Store at -80°C. Aliquot to avoid repeated freezing and thawing.

Applications

- Western Blot

Gene Info — CTSE

Entrez GeneID

[1510](#)

GeneBank Accession#

[BC042537](#)

Protein Accession#

[AAH42537](#)

Gene Name

CTSE

Gene Alias

CATE

Gene Description

cathepsin E

Omim ID

[116890](#)

Gene Ontology

[Hyperlink](#)

Gene Summary

The protein encoded by this gene is a gastric aspartyl protease that functions as a disulfide-linked homodimer. This protease, which is a member of the peptidase C1 family, has a specificity similar to that of pepsin A and cathepsin D. It is an intracellular proteinase that does not appear to be involved in the digestion of dietary protein and is found in highest concentration in the surface of epithelial mucus-producing cells of the stomach. It is the first aspartic proteinase expressed in the fetal stomach and is found in more than half of gastric cancers. It appears, therefore, to be an oncofetal antigen. Transcript variants utilizing alternative polyadenylation signals and two transcript variants encoding different isoforms exist for this gene. [provided by RefSeq]

Other Designations

OTTHUMP00000034345|OTTHUMP00000034346|erythrocyte membrane aspartic proteinase|slow-moving proteinase

Pathway

- [Lysosome](#)