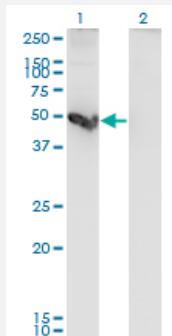


CTSE monoclonal antibody (M10), clone 2D5

Catalog # H00001510-M10

Size 100 ug

Applications

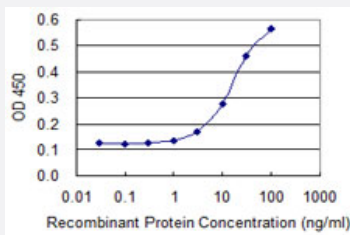


Western Blot (Transfected lysate)

Western Blot analysis of CTSE expression in transfected 293T cell line by CTSE monoclonal antibody (M10), clone 2D5.

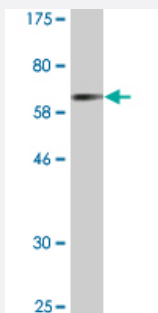
Lane 1: CTSE transfected lysate (Predicted MW: 42.8 kDa).

Lane 2: Non-transfected lysate.



Sandwich ELISA (Recombinant protein)

Detection limit for recombinant GST tagged CTSE is 1 ng/ml as a capture antibody.



Western Blot detection against Immunogen (67.43 kDa) .

Specification

Product Description

Mouse monoclonal antibody raised against a full-length recombinant CTSE.

Immunogen	CTSE (AAH42537, 18 a.a. ~ 396 a.a) full-length recombinant protein with GST tag. MW of the GST tag alone is 26 KDa.
Sequence	QGSLHRVPLRRHPTLKKKLRRARSQLSEFWKSHNLDMIQFTESCSMDQSAKEPLINYLDMEYFGTISIGSPPQNFTVIFDTGSSNLWVPSVYCTSPACKTHSRFQPSQSSSTYSQPGQSFSIQYGTGSLSGIIGADQVSVEGLTVVGQQFGESVTEPGQTLVDAEFDGILGLGYPSLAVGGVTPVFDNMMAQNLVDLPMFSVYMSSNPEGGAGSELIFGGYDHSFSGSLNWWVPVKQAYWQIALDNIQVGGTVMFCSEGCQAMDGTGSLITGPSDKIKQLQNAIGAAPVDGEYAVECANLNVMPDVTFTINGVPYTLSPYATLLDFVDGMQFCSSGFQGLDIHPPAGPLWILGDVFIQFYVFDNRGNNRVGLAPAVP
Host	Mouse
Reactivity	Human
Interspecies Antigen Sequence	Mouse (83); Rat (77)
Isotype	IgG2a
Quality Control Testing	Antibody Reactive Against Recombinant Protein. Western Blot detection against Immunogen (67.43 KDa) .
Storage Buffer	In 1x PBS, pH 7.4
Storage Instruction	Store at -20°C or lower. Aliquot to avoid repeated freezing and thawing.

Applications

- Western Blot (Transfected lysate)

Western Blot analysis of CTSE expression in transfected 293T cell line by CTSE monoclonal antibody (M10), clone 2D5.

Lane 1: CTSE transfected lysate (Predicted MW: 42.8 KDa).

Lane 2: Non-transfected lysate.

[Protocol Download](#)

- Western Blot (Recombinant protein)

[Protocol Download](#)

- Sandwich ELISA (Recombinant protein)

Detection limit for recombinant GST tagged CTSE is 1 ng/ml as a capture antibody.

[Protocol Download](#)

- ELISA

Gene Info — CTSE

Entrez GeneID [1510](#)

GeneBank Accession# [BC042537](#)

Protein Accession# [AAH42537](#)

Gene Name CTSE

Gene Alias CATE

Gene Description cathepsin E

Omim ID [116890](#)

Gene Ontology [Hyperlink](#)

Gene Summary

The protein encoded by this gene is a gastric aspartyl protease that functions as a disulfide-linked homodimer. This protease, which is a member of the peptidase C1 family, has a specificity similar to that of pepsin A and cathepsin D. It is an intracellular proteinase that does not appear to be involved in the digestion of dietary protein and is found in highest concentration in the surface of epithelial mucus-producing cells of the stomach. It is the first aspartic proteinase expressed in the fetal stomach and is found in more than half of gastric cancers. It appears, therefore, to be an oncofetal antigen. Transcript variants utilizing alternative polyadenylation signals and two transcript variants encoding different isoforms exist for this gene. [provided by RefSeq]

Other Designations

OTTHUMP00000034345|OTTHUMP00000034346|erythrocyte membrane aspartic proteinase|slow-moving proteinase

Pathway

- [Lysosome](#)