

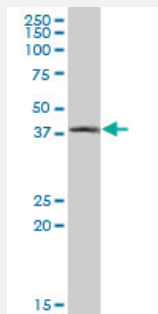
MaxPab®

CTSE purified MaxPab mouse polyclonal antibody (B01P)

Catalog # H00001510-B01P

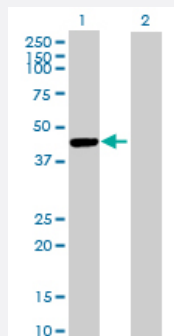
Size 50 ug

Applications



Western Blot (Tissue lysate)

CTSE MaxPab polyclonal antibody. Western Blot analysis of CTSE expression in human stomach.



Western Blot (Transfected lysate)

Western Blot analysis of CTSE expression in transfected 293T cell line ([H00001510-T01](#)) by CTSE MaxPab polyclonal antibody.

Lane 1: CTSE transfected lysate(43.67 KDa).

Lane 2: Non-transfected lysate.

Specification

Product Description

Mouse polyclonal antibody raised against a full-length human CTSE protein.

Immunogen

CTSE (AAH42537, 18 a.a. ~ 396 a.a) full-length human protein.

Sequence

QGS LHRVPLRRHPTLKKKL RARSQ LSEFWKSHNLD MIQFTESC SMDQSAKEPLIN YLDMEYFGTI
SIGSP PQNFTVIFDTG SSNLWVPSVYCTSPACKTHSRFQPSQSSTYSQPGQSFSIQYGTGSLSGIIG
ADQVSVEGLTVVGQQFGESVTEPGQTLVDAEFDGILGLGYPSLAVGGVTPVFDNMMAQNLVDLP
MFSVYMSSNPEGGAGSELIFGGYDHSFSGSLNWVPVTKQAYWQIALDNIQVGGTVMFCSEGCQ
AIVDTG TSLITGPSDKIKQLQNAIGAAPVDGEYAVECANLNVMPDVTFTINGVPYTLSP TAYTL LDFV
DGMQFCSSGFQGLDIHPPAGPLWILGDV FIRQFYSVFDRGNRVRGLAPAVP

Host

Mouse

| | |
|-------------------------------|--|
| Reactivity | Human |
| Interspecies Antigen Sequence | Mouse (83); Rat (77) |
| Quality Control Testing | Antibody reactive against mammalian transfected lysate. |
| Storage Buffer | In 1x PBS, pH 7.4 |
| Storage Instruction | Store at -20°C or lower. Aliquot to avoid repeated freezing and thawing. |

Applications

- Western Blot (Tissue lysate)

CTSE MaxPab polyclonal antibody. Western Blot analysis of CTSE expression in human stomach.

[Protocol Download](#)

- Western Blot (Transfected lysate)

Western Blot analysis of CTSE expression in transfected 293T cell line ([H00001510-T01](#)) by CTSE MaxPab polyclonal antibody.

Lane 1: CTSE transfected lysate(43.67 KDa).

Lane 2: Non-transfected lysate.

[Protocol Download](#)

Gene Info — CTSE

| | |
|---------------------|---------------------------|
| Entrez GeneID | 1510 |
| GeneBank Accession# | BC042537 |
| Protein Accession# | = |
| Gene Name | CTSE |
| Gene Alias | CATE |
| Gene Description | cathepsin E |
| Omim ID | 116890 |
| Gene Ontology | Hyperlink |

Gene Summary

The protein encoded by this gene is a gastric aspartyl protease that functions as a disulfide-linked homodimer. This protease, which is a member of the peptidase C1 family, has a specificity similar to that of pepsin A and cathepsin D. It is an intracellular proteinase that does not appear to be involved in the digestion of dietary protein and is found in highest concentration in the surface of epithelial mucus-producing cells of the stomach. It is the first aspartic proteinase expressed in the fetal stomach and is found in more than half of gastric cancers. It appears, therefore, to be an oncofetal antigen. Transcript variants utilizing alternative polyadenylation signals and two transcript variants encoding different isoforms exist for this gene. [provided by RefSeq]

Other Designations

OTTHUMP00000034345|OTTHUMP00000034346|erythrocyte membrane aspartic proteinase|slow-moving proteinase

Pathway

- [Lysosome](#)