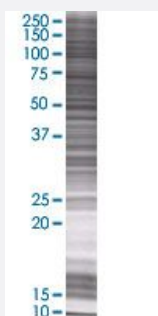


# CTSB 293T Cell Transient Overexpression Lysate(Denatured)

Catalog # H00001508-T01

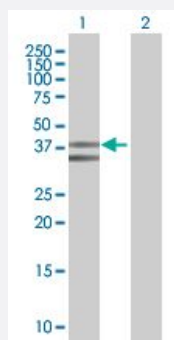
Size 100 uL

## Applications



### SDS-PAGE Gel

CTSB transfected lysate.



### Western Blot

Lane 1: CTSB transfected lysate ( 37.4 KDa)

Lane 2: Non-transfected lysate.

## Specification

**Transfected Cell Line** 293T

**Plasmid** pCMV-CTSB full-length

**Host** Human

**Theoretical MW (kDa)** 37.4

**Quality Control Testing** Transient overexpression cell lysate was tested with Anti-CTSB antibody ([H00001508-B01](#)) by Western Blots.  
 SDS-PAGE Gel  
 CTSB transfected lysate.  
 Western Blot  
 Lane 1: CTSB transfected lysate ( 37.4 KDa)  
 Lane 2: Non-transfected lysate.

<b>Storage Buffer</b>	1X Sample Buffer (50 mM Tris-HCl, 2% SDS, 10% glycerol, 300 mM 2-mercaptoethanol, 0.01% Bromophenol blue)
<b>Storage Instruction</b>	Store at -80°C. Aliquot to avoid repeated freezing and thawing.

## Applications

- Western Blot

## Gene Info — CTSB

<b>Entrez GeneID</b>	<a href="#">1508</a>
<b>GeneBank Accession#</b>	<a href="#">NM_001908.3</a>
<b>Protein Accession#</b>	<a href="#">NP_001899.1</a>
<b>Gene Name</b>	CTSB
<b>Gene Alias</b>	APPS, CPSB
<b>Gene Description</b>	cathepsin B
<b>Omim ID</b>	<a href="#">116810</a>
<b>Gene Ontology</b>	<a href="#">Hyperlink</a>
<b>Gene Summary</b>	The protein encoded by this gene is a lysosomal cysteine proteinase composed of a dimer of disulfide-linked heavy and light chains, both produced from a single protein precursor. It is also known as amyloid precursor protein secretase and is involved in the proteolytic processing of amyloid precursor protein (APP). Incomplete proteolytic processing of APP has been suggested to be a causative factor in Alzheimer disease, the most common cause of dementia. Overexpression of the encoded protein, which is a member of the peptidase C1 family, has been associated with esophageal adenocarcinoma and other tumors. At least five transcript variants encoding the same protein have been found for this gene. [provided by RefSeq]
<b>Other Designations</b>	APP secretase OTTHUMP00000116009 amyloid precursor protein secretase cathepsin B1 cysteine protease preprocathepsin B

## Pathway

- [Antigen processing and presentation](#)
- [Lysosome](#)

## Disease

- [Adenocarcinoma](#)
- [Calcinosis](#)
- [Cardiovascular Diseases](#)
- [Diabetes Mellitus](#)
- [Edema](#)
- [Genetic Predisposition to Disease](#)
- [Kidney Failure](#)
- [Pancreatitis](#)
- [Prostatic Neoplasms](#)
- [Urinary Bladder Neoplasms](#)