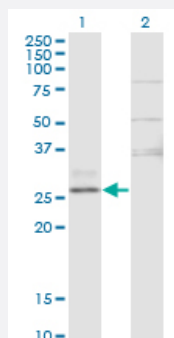


CTRB1 monoclonal antibody (M02), clone 3C8

Catalog # H00001504-M02

Size 100 ug

Applications

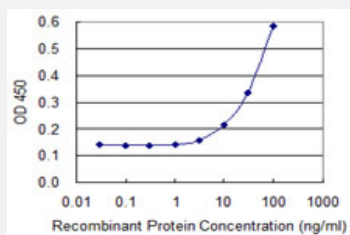


Western Blot (Transfected lysate)

Western Blot analysis of CTRB1 expression in transfected 293T cell line by CTRB1 monoclonal antibody (M02), clone 3C8.

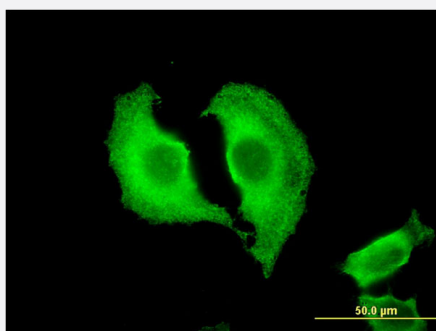
Lane 1: CTRB1 transfected lysate (Predicted MW: 27.9 KDa).

Lane 2: Non-transfected lysate.



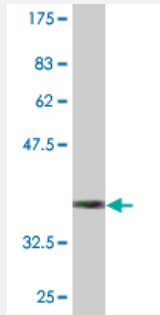
Sandwich ELISA (Recombinant protein)

Detection limit for recombinant GST tagged CTRB1 is 3 ng/ml as a capture antibody.



Immunofluorescence

Immunofluorescence of monoclonal antibody to CTRB1 on HeLa cell .
[antibody concentration 10 ug/ml]



Western Blot detection against Immunogen (36.74 KDa) .

Specification

Product Description	Mouse monoclonal antibody raised against a partial recombinant CTRB1.
Immunogen	CTRB1 (NP_001897, 101 a.a. ~ 200 a.a) partial recombinant protein with GST tag. MW of the GST tag alone is 26 KDa.
Sequence	LKIAKVFKNPKFSILTVNNDITLLKLATPARFSQTVSAVCLPSADDDFPAGTLCATTGWGKTKYNAN KTPDKLQQAALPLLSNAECKKSWGRRITDVMIC
Host	Mouse
Reactivity	Human
Isotype	IgG2a Kappa
Quality Control Testing	Antibody Reactive Against Recombinant Protein. Western Blot detection against Immunogen (36.74 KDa) .
Storage Buffer	In 1x PBS, pH 7.4
Storage Instruction	Store at -20°C or lower. Aliquot to avoid repeated freezing and thawing.

Applications

- Western Blot (Transfected lysate)

Western Blot analysis of CTRB1 expression in transfected 293T cell line by CTRB1 monoclonal antibody (M02), clone 3C8.

Lane 1: CTRB1 transfected lysate (Predicted MW: 27.9 KDa).

Lane 2: Non-transfected lysate.

[Protocol Download](#)

- Western Blot (Recombinant protein)

[Protocol Download](#)

- Sandwich ELISA (Recombinant protein)

Detection limit for recombinant GST tagged CTRB1 is 3 ng/ml as a capture antibody.

[Protocol Download](#)

- ELISA

- Immunofluorescence

Immunofluorescence of monoclonal antibody to CTRB1 on HeLa cell . [antibody concentration 10 ug/ml]

Gene Info — CTRB1

Entrez GeneID [1504](#)

GeneBank Accession# [NM_001906](#)

Protein Accession# [NP_001897](#)

Gene Name CTRB1

Gene Alias CTRB, FLJ42412, MGC88037

Gene Description chymotrypsinogen B1

Omim ID [118890](#)

Gene Ontology [Hyperlink](#)

Gene Summary Alpha-chymotrypsin (EC 3.4.21.1) is one of a family of serine proteases secreted into the gastrointestinal tract as the inactive precursor chymotrypsinogen. The zymogen is activated by proteolytic cleavage by trypsin (PRSS1; MIM 276000).[supplied by OMIM]

Other Designations -

Disease

- [Genetic Predisposition to Disease](#)