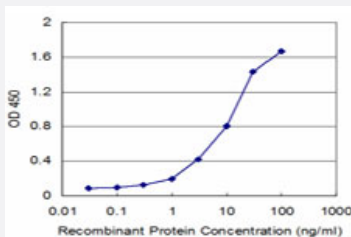


# CTNNA1 monoclonal antibody (M03), clone 4G6

Catalog # H00001495-M03

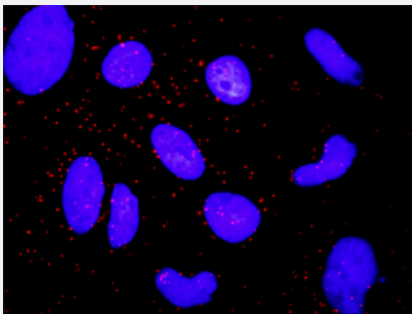
Size 100 ug

## Applications



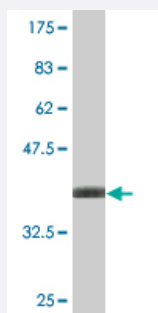
### Sandwich ELISA (Recombinant protein)

Detection limit for recombinant GST tagged CTNNA1 is approximately 0.3ng/ml as a capture antibody.



### In situ Proximity Ligation Assay (Cell)

Proximity Ligation Analysis of protein-protein interactions between ARRB2 and CTNNA1. HeLa cells were stained with anti-ARRB2 rabbit purified polyclonal 1:1200 and anti-CTNNA1 mouse monoclonal antibody 1:50. Each red dot represents the detection of protein-protein interaction complex, and nuclei were counterstained with DAPI (blue).



Western Blot detection against Immunogen (36.63 KDa) .

## Specification

### Product Description

Mouse monoclonal antibody raised against a partial recombinant CTNNA1.

Immunogen	CTNNA1 (NP_001894, 152 a.a. ~ 250 a.a) partial recombinant protein with GST tag. MW of the GST tag alone is 26 KDa.
Sequence	VQLKVVEDGILKLRNAGNEQDLGIQYKALKPEVDKLNIMAAKRQQELKDVGHRDQMAAARGILQK NVPILYTASQACLQHPDVAAAYKANRDLIYKQLQQ
Host	Mouse
Reactivity	Human
Isotype	IgG1 Kappa
Quality Control Testing	Antibody Reactive Against Recombinant Protein. Western Blot detection against Immunogen (36.63 KDa) .
Storage Buffer	In 1x PBS, pH 7.4
Storage Instruction	Store at -20°C or lower. Aliquot to avoid repeated freezing and thawing.

## Applications

- Western Blot (Recombinant protein)

[Protocol Download](#)

- Sandwich ELISA (Recombinant protein)

Detection limit for recombinant GST tagged CTNNA1 is approximately 0.3ng/ml as a capture antibody.

[Protocol Download](#)

- ELISA

- In situ* Proximity Ligation Assay (Cell)

Proximity Ligation Analysis of protein-protein interactions between ARRB2 and CTNNA1. HeLa cells were stained with anti-ARRB2 rabbit purified polyclonal 1:1200 and anti-CTNNA1 mouse monoclonal antibody 1:50. Each red dot represents the detection of protein-protein interaction complex, and nuclei were counterstained with DAPI (blue).

## Gene Info — CTNNA1

Entrez GeneID	<a href="#">1495</a>
GeneBank Accession#	<a href="#">NM_001903</a>
Protein Accession#	<a href="#">NP_001894</a>

Gene Name	CTNNA1
Gene Alias	CAP102, FLJ36832
Gene Description	catenin (cadherin-associated protein), alpha 1, 102kDa
Omim ID	<a href="#">116805</a>
Gene Ontology	<a href="#">Hyperlink</a>
Gene Summary	alpha 1
Other Designations	alpha-E-catenin alpha-catenin alphaE-catenin cadherin-associated protein,102kDa catenin (cadherin-associated protein), alpha 1 (102kD) catenin, alpha 1

## Pathway

- [Adherens junction](#)
- [Arrhythmogenic right ventricular cardiomyopathy \(ARVC\)](#)
- [Endometrial cancer](#)
- [Leukocyte transendothelial migration](#)
- [Pathways in cancer](#)
- [Tight junction](#)

## Disease

- [Cardiovascular Diseases](#)
- [Diabetes Mellitus](#)
- [Edema](#)