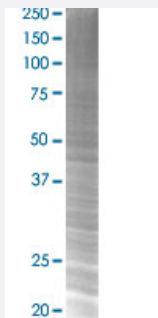


CSTF2 293T Cell Transient Overexpression Lysate(Denatured)

Catalog # H00001478-T02

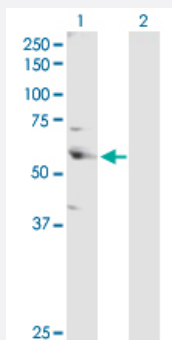
Size 100 uL

Applications



SDS-PAGE Gel

CSTF2 transfected lysate.



Western Blot

Lane 1: CSTF2 transfected lysate (61.00 KDa)

Lane 2: Non-transfected lysate.

Specification

Transfected Cell Line	293T
Plasmid	pCMV-CSTF2 full-length
Host	Human
Theoretical MW (kDa)	61
Interspecies Antigen Sequence	Mouse (93); Rat (93)

Quality Control Testing

Transient overexpression cell lysate was tested with Anti-CSTF2 antibody ([H00001478-D01P](#)) by Western Blots.
SDS-PAGE Gel
CSTF2 transfected lysate.
Western Blot
Lane 1: CSTF2 transfected lysate (61.00 kDa)
Lane 2: Non-transfected lysate.

Storage Buffer

1X Sample Buffer (50 mM Tris-HCl, 2% SDS, 10% glycerol, 300 mM 2-mercaptoethanol, 0.01% Bromophenol blue)

Storage Instruction

Store at -80°C. Aliquot to avoid repeated freezing and thawing.

Applications

- Western Blot

Gene Info — CSTF2

Entrez GeneID

[1478](#)

GeneBank Accession#

[NM_001325](#)

Protein Accession#

[NP_001316.1](#)

Gene Name

CSTF2

Gene Alias

CstF-64

Gene Description

cleavage stimulation factor, 3' pre-RNA, subunit 2, 64kDa

Omim ID

[600368](#)

Gene Ontology

[Hyperlink](#)

Gene Summary

This gene encodes a nuclear protein with an RRM (RNA recognition motif) domain. The protein is a member of the cleavage stimulation factor (CSTF) complex that is involved in the 3' end cleavage and polyadenylation of pre-mRNAs. Specifically, this protein binds GU-rich elements within the 3'-untranslated region of mRNAs. [provided by RefSeq]

Other Designations

CF-1 64 kDa subunit|OTTHUMP00000024310|betaCstF-64 variant 2|cleavage stimulation factor subunit 2|cleavage stimulation factor, 64kDa subunit