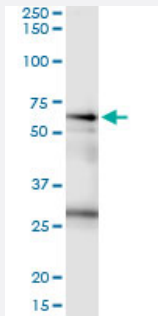


# CSTF2 (Human) IP-WB Antibody Pair

Catalog # H00001478-PW2

Size 1 Set

## Applications



Immunoprecipitation of CSTF2 transfected lysate using rabbit polyclonal anti-CSTF2 and Protein A Magnetic Bead ([U0007](#)), and immunoblotted with mouse purified polyclonal anti-CSTF2.

## Specification

<b>Product Description</b>	This IP-WB antibody pair set comes with one antibody for immunoprecipitation and another to detect the precipitated protein in western blot.
<b>Reactivity</b>	Human
<b>Interspecies Antigen Sequence</b>	Mouse (93%); Rat (92%)
<b>Quality Control Testing</b>	Immunoprecipitation-Western Blot (IP-WB) Immunoprecipitation of CSTF2 transfected lysate using rabbit polyclonal anti-CSTF2 and Protein A Magnetic Bead ( <a href="#">U0007</a> ), and immunoblotted with mouse purified polyclonal anti-CSTF2.
<b>Supplied Product</b>	Antibody pair set content: 1. Antibody pair for IP: rabbit polyclonal anti-CSTF2 (300 ul) 2. Antibody pair for WB: mouse purified polyclonal anti-CSTF2 (50 ug)
<b>Storage Instruction</b>	Store reagents of the antibody pair set at -20°C or lower. Please aliquot to avoid repeated freeze thaw cycle. Reagents should be returned to -20°C storage immediately after use.

## Applications

- Immunoprecipitation-Western Blot

[Protocol Download](#)

## Gene Info — CSTF2

**Entrez GeneID** [1478](#)

**Gene Name** CSTF2

**Gene Alias** CstF-64

**Gene Description** cleavage stimulation factor, 3' pre-RNA, subunit 2, 64kDa

**Omim ID** [600368](#)

**Gene Ontology** [Hyperlink](#)

**Gene Summary** This gene encodes a nuclear protein with an RRM (RNA recognition motif) domain. The protein is a member of the cleavage stimulation factor (CSTF) complex that is involved in the 3' end cleavage and polyadenylation of pre-mRNAs. Specifically, this protein binds GU-rich elements within the 3'-untranslated region of mRNAs. [provided by RefSeq]

**Other Designations** CF-1 64 kDa subunit|OTTHUMP00000024310|betaCstF-64 variant 2|cleavage stimulation factor subunit 2|cleavage stimulation factor, 64kDa subunit