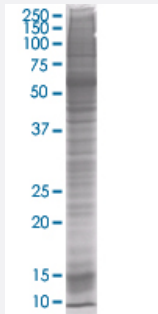


CSTB 293T Cell Transient Overexpression Lysate(Denatured)

Catalog # H00001476-T01

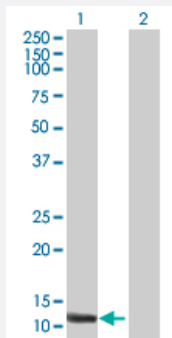
Size 100 uL

Applications



SDS-PAGE Gel

CSTB transfected lysate



Western Blot

Lane 1: CSTB transfected lysate (10.89 KDa).

Lane 2: Non-transfected lysate.

Specification

Transfected Cell Line 293T

Plasmid pCMV-CSTB full-length

Host Human

Theoretical MW (kDa) 10.89

Quality Control Testing Transient overexpression cell lysate was tested with Anti-CSTB antibody ([H00001476-B01](#)) by Western Blots.
 SDS-PAGE Gel
 CSTB transfected lysate
 Western Blot
 Lane 1: CSTB transfected lysate (10.89 KDa).
 Lane 2: Non-transfected lysate.

Storage Buffer

1X Sample Buffer (50 mM Tris-HCl, 2% SDS, 10% glycerol, 300 mM 2-mercaptoethanol, 0.01% Bromophenol blue)

Storage Instruction

Store at -80°C. Aliquot to avoid repeated freezing and thawing.

Applications

- Western Blot

Gene Info — CSTB

Entrez GeneID[1476](#)**GeneBank Accession#**[BC003370](#)**Protein Accession#**[AAH03370](#)**Gene Name**

CSTB

Gene Alias

CST6, EPM1, PME, STFB

Gene Description

cystatin B (stefin B)

Omim ID[254800 601145](#)**Gene Ontology**[Hyperlink](#)**Gene Summary**

The cystatin superfamily encompasses proteins that contain multiple cystatin-like sequences. Some of the members are active cysteine protease inhibitors, while others have lost or perhaps never acquired this inhibitory activity. There are three inhibitory families in the superfamily, including the type 1 cystatins (stefins), type 2 cystatins and kininogens. This gene encodes a stefin that functions as an intracellular thiol protease inhibitor. The protein is able to form a dimer stabilized by noncovalent forces, inhibiting papain and cathepsins L, H and B. The protein is thought to play a role in protecting against the proteases leaking from lysosomes. Evidence indicates that mutations in this gene are responsible for the primary defects in patients with progressive myoclonic epilepsy (EPM1). [provided by RefSeq]

Other Designations

CPI-B|cystatin B|liver thiol proteinase inhibitor|stefin B

Disease

- [Cardiovascular Diseases](#)
- [Diabetes Mellitus](#)

- [Edema](#)
- [Epilepsy](#)