

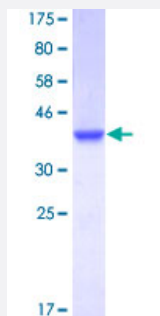
Full-Length

CSTB (Human) Recombinant Protein (P02)

Catalog # H00001476-P02

Size 25 ug, 10 ug

Applications



Specification

Product Description	Human CSTB full-length ORF (AAH10532, 1 a.a. - 98 a.a.) recombinant protein with GST-tag at N-terminal.
Sequence	MMCGAPSATQPATAETQHIADQVRSQLEEKENKKFPVFKAVSFKSQVVAGTNYFIKVVHVGDEDFVHLRVFQSLPHENKPLTLSNYQTNKAKHDELTYP
Host	Wheat Germ (in vitro)
Theoretical MW (kDa)	36.52
Preparation Method	in vitro wheat germ expression system
Purification	Glutathione Sepharose 4 Fast Flow
Quality Control Testing	12.5% SDS-PAGE Stained with Coomassie Blue.
Storage Buffer	50 mM Tris-HCl, 10 mM reduced Glutathione, pH=8.0 in the elution buffer.
Storage Instruction	Store at -80°C. Aliquot to avoid repeated freezing and thawing.
Note	Best use within three months from the date of receipt of this protein.

Applications

- Enzyme-linked Immunoabsorbent Assay
- Western Blot (Recombinant protein)
- Antibody Production
- Protein Array

Gene Info — CSTB

Entrez GeneID [1476](#)

GeneBank Accession# [BC010532](#)

Protein Accession# [AAH10532](#)

Gene Name CSTB

Gene Alias CST6, EPM1, PME, STFB

Gene Description cystatin B (stefin B)

Omim ID [254800 601145](#)

Gene Ontology [Hyperlink](#)

Gene Summary

The cystatin superfamily encompasses proteins that contain multiple cystatin-like sequences. Some of the members are active cysteine protease inhibitors, while others have lost or perhaps never acquired this inhibitory activity. There are three inhibitory families in the superfamily, including the type 1 cystatins (stefins), type 2 cystatins and kininogens. This gene encodes a stefin that functions as an intracellular thiol protease inhibitor. The protein is able to form a dimer stabilized by noncovalent forces, inhibiting papain and cathepsins L, H and B. The protein is thought to play a role in protecting against the proteases leaking from lysosomes. Evidence indicates that mutations in this gene are responsible for the primary defects in patients with progressive myoclonic epilepsy (EPM1). [provided by RefSeq]

Other Designations CPHB|cystatin B|liver thiol proteinase inhibitor|stefin B

Disease

- [Cardiovascular Diseases](#)
- [Diabetes Mellitus](#)
- [Edema](#)
- [Epilepsy](#)