

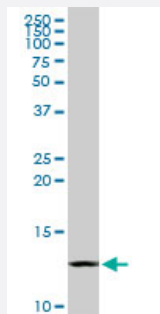
MaxPab®

CSTB purified MaxPab rabbit polyclonal antibody (D01P)

Catalog # H00001476-D01P

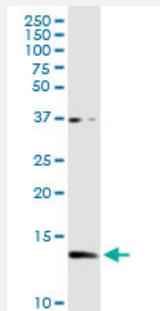
Size 100 ug

Applications



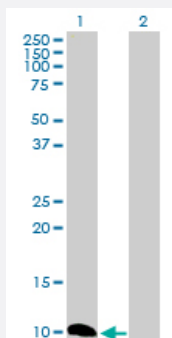
Western Blot (Tissue lysate)

CSTB MaxPab rabbit polyclonal antibody. Western Blot analysis of CSTB expression in human placenta.



Western Blot (Cell lysate)

CSTB MaxPab rabbit polyclonal antibody. Western Blot analysis of CSTB expression in A-431.



Western Blot (Transfected lysate)

Western Blot analysis of CSTB expression in transfected 293T cell line ([H00001476-T02](#)) by CSTB MaxPab polyclonal antibody.

Lane 1: CSTB transfected lysate(11.10 KDa).

Lane 2: Non-transfected lysate.

Specification

Product Description

Rabbit polyclonal antibody raised against a full-length human CSTB protein.

Immunogen	CSTB (NP_000091.1, 1 a.a. ~ 98 a.a) full-length human protein.
Sequence	MMCGAPSATQPATAETQHIADQVRSQLEEKENKKFPVFKAVSFKSQVVAGTNYFIKVHVGDEDF VHLRVFQSLPHENKPLTLSNYQTNKAKHDELTYP
Host	Rabbit
Reactivity	Human
Quality Control Testing	Antibody reactive against mammalian transfected lysate.
Storage Buffer	In 1x PBS, pH 7.4
Storage Instruction	Store at -20°C or lower. Aliquot to avoid repeated freezing and thawing.

Applications

- Western Blot (Tissue lysate)

CSTB MaxPab rabbit polyclonal antibody. Western Blot analysis of CSTB expression in human placenta.

[Protocol Download](#)

- Western Blot (Cell lysate)

CSTB MaxPab rabbit polyclonal antibody. Western Blot analysis of CSTB expression in A-431.

[Protocol Download](#)

- Western Blot (Transfected lysate)

Western Blot analysis of CSTB expression in transfected 293T cell line ([H00001476-T02](#)) by CSTB MaxPab polyclonal antibody.

Lane 1: CSTB transfected lysate(11.10 KDa).

Lane 2: Non-transfected lysate.

[Protocol Download](#)

Gene Info — CSTB

Entrez GeneID	1476
GeneBank Accession#	NM_000100.2
Protein Accession#	NP_000091.1
Gene Name	CSTB

Gene Alias	CST6, EPM1, PME, STFB
Gene Description	cystatin B (stefin B)
Omim ID	254800 601145
Gene Ontology	Hyperlink
Gene Summary	<p>The cystatin superfamily encompasses proteins that contain multiple cystatin-like sequences. Some of the members are active cysteine protease inhibitors, while others have lost or perhaps never acquired this inhibitory activity. There are three inhibitory families in the superfamily, including the type 1 cystatins (stefins), type 2 cystatins and kininogens. This gene encodes a stefin that functions as an intracellular thiol protease inhibitor. The protein is able to form a dimer stabilized by noncovalent forces, inhibiting papain and cathepsins L, H and B. The protein is thought to play a role in protecting against the proteases leaking from lysosomes. Evidence indicates that mutations in this gene are responsible for the primary defects in patients with progressive myoclonic epilepsy (EPM1). [provided by RefSeq]</p>
Other Designations	CPI-B cystatin B liver thiol proteinase inhibitor stefin B

Disease

- [Cardiovascular Diseases](#)
- [Diabetes Mellitus](#)
- [Edema](#)
- [Epilepsy](#)