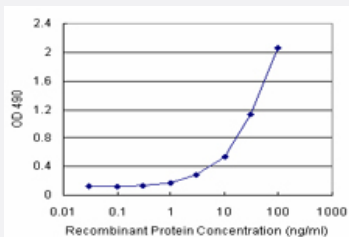


CSTB (Human) Matched Antibody Pair

Catalog # H00001476-AP11 Size 1 Set

Applications



Sandwich ELISA detection sensitivity ranging from 1 ng/ml to 100 ng/ml.

Specification

Product Description	This antibody pair set comes with a matched antibody pair to detect and quantify the protein level of human CSTB.
Reactivity	Human
Quality Control Testing	Standard curve using recombinant protein (H00001476-P02) as an analyte. Sandwich ELISA detection sensitivity ranging from 1 ng/ml to 100 ng/ml.
Supplied Product	Antibody pair set content: 1. Capture antibody: rabbit MaxPab® affinity purified polyclonal anti-CSTB (100 ug) 2. Detection antibody: mouse monoclonal anti-CSTB, IgG1 Kappa (20 ug) *Reagents are sufficient for at least 1-2 x 96 well plates using recommended protocols.
Storage Instruction	Store reagents of the antibody pair set at -20°C or lower. Please aliquot to avoid repeated freeze thaw cycle. Reagents should be returned to -20°C storage immediately after use.

Applications

- ELISA Pair (Recombinant protein)

[Protocol Download](#)

Gene Info — CSTB

Entrez GeneID [1476](#)

Gene Name CSTB

Gene Alias CST6, EPM1, PME, STFB

Gene Description cystatin B (stefin B)

Omim ID [254800 601145](#)

Gene Ontology [Hyperlink](#)

Gene Summary

The cystatin superfamily encompasses proteins that contain multiple cystatin-like sequences. Some of the members are active cysteine protease inhibitors, while others have lost or perhaps never acquired this inhibitory activity. There are three inhibitory families in the superfamily, including the type 1 cystatins (stefins), type 2 cystatins and kininogens. This gene encodes a stefin that functions as an intracellular thiol protease inhibitor. The protein is able to form a dimer stabilized by noncovalent forces, inhibiting papain and cathepsins L, H and B. The protein is thought to play a role in protecting against the proteases leaking from lysosomes. Evidence indicates that mutations in this gene are responsible for the primary defects in patients with progressive myoclonic epilepsy (EPM1). [provided by RefSeq]

Other Designations CPl-B|cystatin B|liver thiol proteinase inhibitor|stefin B

Disease

- [Cardiovascular Diseases](#)
- [Diabetes Mellitus](#)
- [Edema](#)
- [Epilepsy](#)