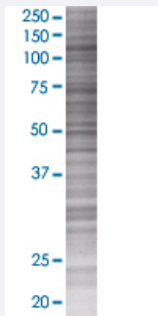


# CST6 293T Cell Transient Overexpression Lysate(Denatured)

Catalog # H00001474-T01

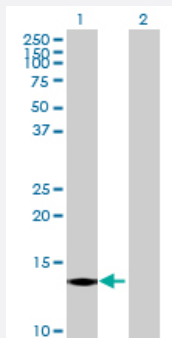
Size 100 uL

## Applications



### SDS-PAGE Gel

CST6 transfected lysate.



### Western Blot

Lane 1: CST6 transfected lysate ( 16.5 KDa)

Lane 2: Non-transfected lysate.

## Specification

Transfected Cell Line	293T
Plasmid	pCMV-CST6 full-length
Host	Human
Theoretical MW (kDa)	16.5
Interspecies Antigen Sequence	Mouse (69); Rat (70)

**Quality Control Testing**

Transient overexpression cell lysate was tested with Anti-CST6 antibody ([H00001474-B01](#)) by Western Blots.  
SDS-PAGE Gel  
CST6 transfected lysate.  
Western Blot  
Lane 1: CST6 transfected lysate ( 16.5 KDa)  
Lane 2: Non-transfected lysate.

**Storage Buffer**

1X Sample Buffer (50 mM Tris-HCl, 2% SDS, 10% glycerol, 300 mM 2-mercaptoethanol, 0.01% Bromophenol blue)

**Storage Instruction**

Store at -80°C. Aliquot to avoid repeated freezing and thawing.

## Applications

- Western Blot

## Gene Info — CST6

**Entrez GeneID**[1474](#)**GeneBank Accession#**[NM\\_001323.2](#)**Protein Accession#**[NP\\_001314.1](#)**Gene Name**

CST6

**Gene Alias**

-

**Gene Description**

cystatin E/M

**Omim ID**[601891](#)**Gene Ontology**[Hyperlink](#)**Gene Summary**

The cystatin superfamily encompasses proteins that contain multiple cystatin-like sequences. Some of the members are active cysteine protease inhibitors, while others have lost or perhaps never acquired this inhibitory activity. There are three inhibitory families in the superfamily, including the type 1 cystatins (stefins), type 2 cystatins and the kininogens. The type 2 cystatin proteins are a class of cysteine proteinase inhibitors found in a variety of human fluids and secretions, where they appear to provide protective functions. This gene encodes a cystatin from the type 2 family, which is down-regulated in metastatic breast tumor cells as compared to primary tumor cells. Loss of expression is likely associated with the progression of a primary tumor to a metastatic phenotype. [provided by RefSeq]

**Other Designations**

cystatin 6|cystatin M|cystatin M/E|cysteine proteinase inhibitor