

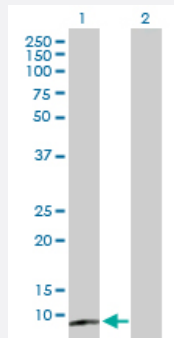
MaxPab®

## CST5 purified MaxPab mouse polyclonal antibody (B01P)

Catalog # H00001473-B01P

Size 50 ug

### Applications



#### Western Blot (Transfected lysate)

Western Blot analysis of CST5 expression in transfected 293T cell line ([H00001473-T01](#)) by CST5 MaxPab polyclonal antibody.

Lane 1: CST5 transfected lysate(15.62 KDa).

Lane 2: Non-transfected lysate.

### Specification

Product Description	Mouse polyclonal antibody raised against a full-length human CST5 protein.
Immunogen	CST5 (NP_001891.2, 1 a.a. ~ 142 a.a) full-length human protein.
Sequence	MMWPMHTPLLLL TALMVA VAGSASAQSRTL AGGIHATDLNDKSVQCALDFAISEYNKVINKDEYY SRPLQVMAAYQQVGGVNYFFNVKFGRTTCTKSQPNLDNCPFNDQPKLKEEEFCSFQINEVPWE DKISILNYKCRKV
Host	Mouse
Reactivity	Human
Interspecies Antigen Sequence	Mouse (42); Rat (47)
Quality Control Testing	Antibody reactive against mammalian transfected lysate.
Storage Buffer	In 1x PBS, pH 7.4
Storage Instruction	Store at -20°C or lower. Aliquot to avoid repeated freezing and thawing.

## Applications

- Western Blot (Transfected lysate)

Western Blot analysis of CST5 expression in transfected 293T cell line ([H00001473-T01](#)) by CST5 MaxPab polyclonal antibody.

Lane 1: CST5 transfected lysate(15.62 KDa).

Lane 2: Non-transfected lysate.

[Protocol Download](#)

## Gene Info — CST5

Entrez GeneID [1473](#)

GeneBank Accession# [NM\\_001900.4](#)

Protein Accession# [NP\\_001891.2](#)

Gene Name CST5

Gene Alias MGC71922

Gene Description cystatin D

Omim ID [123858](#)

Gene Ontology [Hyperlink](#)

**Gene Summary**

The cystatin superfamily encompasses proteins that contain multiple cystatin-like sequences. Some of the members are active cysteine protease inhibitors, while others have lost or perhaps never acquired this inhibitory activity. There are three inhibitory families in the superfamily, including the type 1 cystatins (stefins), type 2 cystatins and the kininogens. The type 2 cystatin proteins are a class of cysteine proteinase inhibitors found in a variety of human fluids and secretions. The cystatin locus on chromosome 20 contains the majority of the type 2 cystatin genes and pseudogenes. This gene is located in the cystatin locus and encodes a protein found in saliva and tears. The encoded protein may play a protective role against proteinases present in the oral cavity. [provided by RefSeq]

**Other Designations** OTTHUMP00000030448|cystatin 5|cysteine-proteinase inhibitor

## Disease

- [Tobacco Use Disorder](#)