

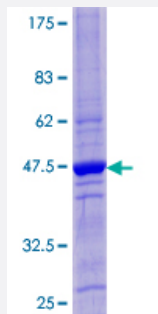
## Full-Length

# CST4 (Human) Recombinant Protein (P01)

Catalog # H00001472-P01

Size 25 ug, 10 ug

## Applications



## Specification

**Product Description**

Human CST4 full-length ORF ( NP\_001890.1, 1 a.a. - 141 a.a.) recombinant protein with GST-tag at N-terminal.

**Sequence**

MARPLCTLLLLMATLAGALASSSKEENRIIPGGIYDADLNDEWVQRALHFAISEYNKATEDEYYRRP  
LQVLRAREQTFGGVNYFFDVEVGRITCKSQPNLDTCAFHEQPELQKKQLCSFEIYVPWEDRM  
SLVNSRCQEA

**Host**

Wheat Germ (in vitro)

**Theoretical MW (kDa)**

42.6

**Preparation Method**
[in vitro wheat germ expression system](#)
**Purification**

Glutathione Sepharose 4 Fast Flow

**Quality Control Testing**

12.5% SDS-PAGE Stained with Coomassie Blue.

**Storage Buffer**

50 mM Tris-HCl, 10 mM reduced Glutathione, pH=8.0 in the elution buffer.

**Storage Instruction**

Store at -80°C. Aliquot to avoid repeated freezing and thawing.

**Note**

Best use within three months from the date of receipt of this protein.

## Applications

- Enzyme-linked Immunoabsorbent Assay
- Western Blot (Recombinant protein)
- Antibody Production
- Protein Array

## Gene Info — CST4

Entrez GeneID [1472](#)

GeneBank Accession# [NM\\_001899.2](#)

Protein Accession# [NP\\_001890.1](#)

Gene Name CST4

Gene Alias MGC71923

Gene Description cystatin S

Omim ID [123857](#)

Gene Ontology [Hyperlink](#)

**Gene Summary**

The cystatin superfamily encompasses proteins that contain multiple cystatin-like sequences. Some of the members are active cysteine protease inhibitors, while others have lost or perhaps never acquired this inhibitory activity. There are three inhibitory families in the superfamily, including the type 1 cystatins (stefins), type 2 cystatins and the kininogens. The type 2 cystatin proteins are a class of cysteine proteinase inhibitors found in a variety of human fluids and secretions. The cystatin locus on chromosome 20 contains the majority of the type 2 cystatin genes and pseudogenes. This gene is located in the cystatin locus and encodes a type 2 salivary cysteine peptidase inhibitor. The protein is an S-type cystatin, based on its high level of expression in saliva, tears and seminal plasma. The specific role in these fluids is unclear but antibacterial and antiviral activity is present, consistent with a protective function. [provided by RefSeq]

**Other Designations** OTTHUMP00000030443|cystatin 4