

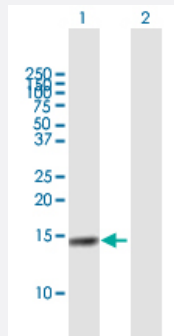
MaxPab®

CST4 purified MaxPab mouse polyclonal antibody (B01P)

Catalog # H00001472-B01P

Size 50 ug

Applications



Western Blot (Transfected lysate)

Western Blot analysis of CST4 expression in transfected 293T cell line ([H00001472-T01](#)) by CST4 MaxPab polyclonal antibody.

Lane 1: CST4 transfected lysate(15.51 KDa).

Lane 2: Non-transfected lysate.

Specification

Product Description	Mouse polyclonal antibody raised against a full-length human CST4 protein.
Immunogen	CST4 (NP_001890.1, 1 a.a. ~ 141 a.a) full-length human protein.
Sequence	MARPLCTLLLLMATLAGALASSSKEENRIIPGGYDADLNDEWVQRALHFAISEYNKATEDEYYRRP LQVLRAREQTFGGVNYFFDVEVGRTICTKSQPNLDTCAFHEQPELQKKQLCSFEIYVPWEDRM SLVNSRCQEA
Host	Mouse
Reactivity	Human
Quality Control Testing	Antibody reactive against mammalian transfected lysate.
Storage Buffer	In 1x PBS, pH 7.4
Storage Instruction	Store at -20°C or lower. Aliquot to avoid repeated freezing and thawing.

Applications

- Western Blot (Transfected lysate)

Western Blot analysis of CST4 expression in transfected 293T cell line ([H00001472-T01](#)) by CST4 MaxPab polyclonal antibody.

Lane 1: CST4 transfected lysate(15.51 KDa).

Lane 2: Non-transfected lysate.

[Protocol Download](#)

Gene Info — CST4

Entrez GeneID [1472](#)

GeneBank Accession# [NM_001899.2](#)

Protein Accession# [NP_001890.1](#)

Gene Name CST4

Gene Alias MGC71923

Gene Description cystatin S

Omim ID [123857](#)

Gene Ontology [Hyperlink](#)

Gene Summary

The cystatin superfamily encompasses proteins that contain multiple cystatin-like sequences. Some of the members are active cysteine protease inhibitors, while others have lost or perhaps never acquired this inhibitory activity. There are three inhibitory families in the superfamily, including the type 1 cystatins (stefins), type 2 cystatins and the kininogens. The type 2 cystatin proteins are a class of cysteine proteinase inhibitors found in a variety of human fluids and secretions. The cystatin locus on chromosome 20 contains the majority of the type 2 cystatin genes and pseudogenes. This gene is located in the cystatin locus and encodes a type 2 salivary cysteine peptidase inhibitor. The protein is an S-type cystatin, based on its high level of expression in saliva, tears and seminal plasma. The specific role in these fluids is unclear but antibacterial and antiviral activity is present, consistent with a protective function. [provided by RefSeq]

Other Designations OTTHUMP00000030443|cystatin 4