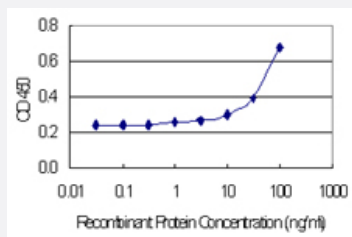


CST2 monoclonal antibody (M04), clone 4E10

Catalog # H00001470-M04

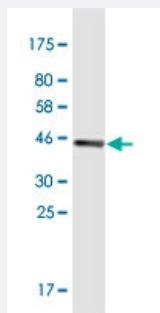
Size 100 ug

Applications



Sandwich ELISA (Recombinant protein)

Detection limit for recombinant GST tagged CST2 is 3 ng/ml as a capture antibody.



Western Blot detection against Immunogen (42.8 KDa) .

Specification

Product Description

Mouse monoclonal antibody raised against a full-length recombinant CST2.

Immunogen

CST2 (NP_001313.1, 1 a.a. ~ 141 a.a) full-length recombinant protein with GST tag. MW of the GST tag alone is 26 KDa.

Sequence

MAWPLCTLLLLLATQAVALLAWSPQEEDRIIEGGYDADLNDERVQRALHFVISEYNKATEDEYYRRL
LRVLRAREQVMGGVNYFFDIEVGRTICTKSQPNLDTCAFHEQPELQKKQLCSFQIYVPWEDRMSL
VNSRCQEA

Host

Mouse

Reactivity

Human

Isotype	IgG2a Kappa
Quality Control Testing	Antibody Reactive Against Recombinant Protein. Western Blot detection against Immunogen (42.8 KDa) .
Storage Buffer	In 1x PBS, pH 7.4
Storage Instruction	Store at -20°C or lower. Aliquot to avoid repeated freezing and thawing.

Applications

- Western Blot (Recombinant protein)

[Protocol Download](#)

- Sandwich ELISA (Recombinant protein)

Detection limit for recombinant GST tagged CST2 is 3 ng/ml as a capture antibody.

[Protocol Download](#)

- ELISA

Gene Info — CST2

Entrez GeneID	1470
GeneBank Accession#	NM_001322.2
Protein Accession#	NP_001313.1
Gene Name	CST2
Gene Alias	MGC71924
Gene Description	cystatin SA
Omim ID	123856
Gene Ontology	Hyperlink

Gene Summary

The cystatin superfamily encompasses proteins that contain multiple cystatin-like sequences. Some of the members are active cysteine protease inhibitors, while others have lost or perhaps never acquired this inhibitory activity. There are three inhibitory families in the superfamily, including the type 1 cystatins (stefins), type 2 cystatins and the kininogens. The type 2 cystatin proteins are a class of cysteine proteinase inhibitors found in a variety of human fluids and secretions, where they appear to provide protective functions. The cystatin locus on chromosome 20 contains the majority of the type 2 cystatin genes and pseudogenes. This gene is located in the cystatin locus and encodes a secreted thiol protease inhibitor found at high levels in saliva, tears and seminal plasma. [provided by RefSeq]

Other Designations

OTTHUMP00000030445|cystatin 2|cystatin S5|cysteine-proteinase inhibitor|salivary cysteine (thiol) protease inhibitor

Disease

- [Cerebral Hemorrhage](#)
- [Genetic Predisposition to Disease](#)
- [Hypertension](#)
- [Intracranial Hemorrhages](#)
- [Stroke](#)
- [Subarachnoid Hemorrhage](#)