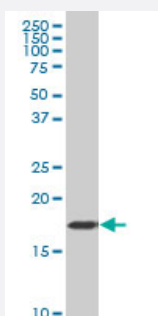


# CSRP1 polyclonal antibody (A01)

Catalog # H00001465-A01

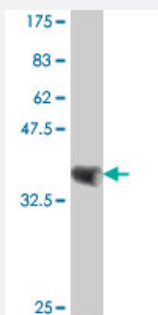
Size 50 uL

## Applications



### Western Blot (Cell lysate)

CSRP1 polyclonal antibody (A01), Lot # 060501JCS1 Western Blot analysis of CSRP1 expression in HepG2 ( Cat # L019V1 ).



Western Blot detection against Immunogen (37 KDa) .

## Specification

### Product Description

Mouse polyclonal antibody raised against a partial recombinant CSRP1.

### Immunogen

CSRP1 (NP\_004069, 94 a.a. ~ 192 a.a) partial recombinant protein with GST tag.

### Sequence

EAPGHRPTTNP NASKFAQKIGGSERCPRCSQAVYAAEKVIGAGKSWHKACFRCAKCGKGLESTT  
LADKDGEIYCKGCYAKNFGPKGFGFGQGAGALVHS

### Host

Mouse

### Reactivity

Human

### Interspecies Antigen Sequence

Mouse (99); Rat (99)

**Quality Control Testing**

Antibody Reactive Against Recombinant Protein.  
Western Blot detection against Immunogen (37 KDa) .

**Storage Buffer**

50 % glycerol

**Storage Instruction**

Store at -20°C or lower. Aliquot to avoid repeated freezing and thawing.

## Applications

- Western Blot (Cell lysate)

CSRP1 polyclonal antibody (A01), Lot # 060501JCS1 Western Blot analysis of CSRP1 expression in HepG2 ( Cat # L019V1 ).

[Protocol Download](#)

- Western Blot (Recombinant protein)

[Protocol Download](#)

- ELISA

## Gene Info — CSRP1

**Entrez GeneID**

[1465](#)

**GeneBank Accession#**

[NM\\_004078](#)

**Protein Accession#**

[NP\\_004069](#)

**Gene Name**

CSRP1

**Gene Alias**

CRP, CRP1, CSRP, CYRP, D1S181E, DKFZp686M148

**Gene Description**

cysteine and glycine-rich protein 1

**Omim ID**

[123876](#)

**Gene Ontology**

[Hyperlink](#)

**Gene Summary**

This gene encodes a member of the cysteine-rich protein (CSRP) family. This gene family include a group of LIM domain proteins, which may be involved in regulatory processes important for development and cellular differentiation. The LIM/double zinc-finger motif found in this gene product occurs in proteins with critical functions in gene regulation, cell growth, and somatic differentiation. [provided by RefSeq]

**Other Designations**

LIM-domain protein|OTTHUMP00000033921|cysteine-rich protein

## Disease

- [Tobacco Use Disorder](#)