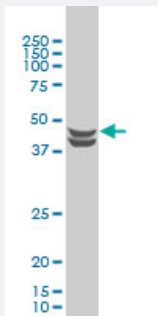


# CSNK2A1 monoclonal antibody (M01), clone 3D9

Catalog # H00001457-M01

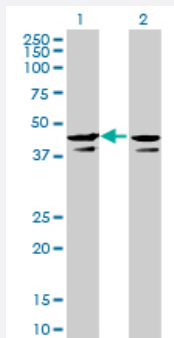
Size 100 ug

## Applications



### Western Blot (Cell lysate)

CSNK2A1 monoclonal antibody (M01), clone 3D9 Western Blot analysis of CSNK2A1 expression in HeLa S3 NE ( Cat # L013V3 ).

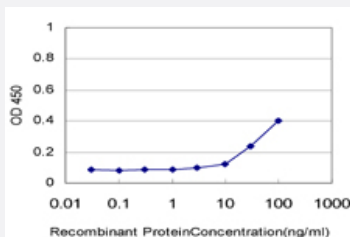


### Western Blot (Transfected lysate)

Western Blot analysis of CSNK2A1 expression in transfected 293T cell line by CSNK2A1 monoclonal antibody (M01), clone 3D9.

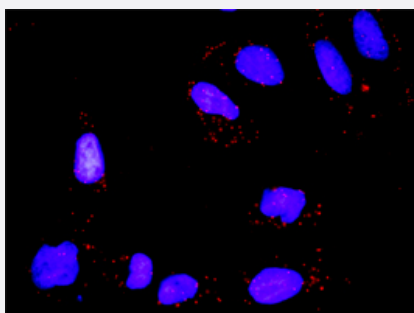
Lane 1: CSNK2A1 transfected lysate(45.1 KDa).

Lane 2: Non-transfected lysate.



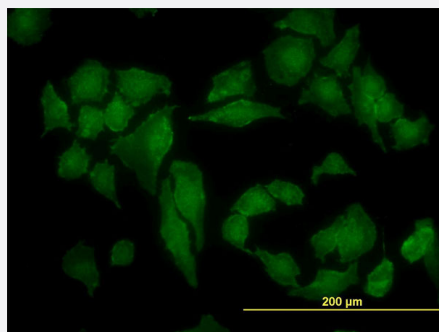
### Sandwich ELISA (Recombinant protein)

Detection limit for recombinant GST tagged CSNK2A1 is approximately 3ng/ml as a capture antibody.



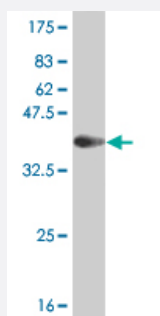
### In situ Proximity Ligation Assay (Cell)

Proximity Ligation Analysis of protein-protein interactions between TP53 and CSNK2A1. HeLa cells were stained with anti-TP53 rabbit purified polyclonal 1:1200 and anti-CSNK2A1 mouse monoclonal antibody 1:50. Each red dot represents the detection of protein-protein interaction complex, and nuclei were counterstained with DAPI (blue).



## Immunofluorescence

Immunofluorescence of monoclonal antibody to CSNK2A1 on HeLa cell.  
[antibody concentration 10 ug/ml]



Western Blot detection against Immunogen (36.63 KDa) .

## Specification

<b>Product Description</b>	Mouse monoclonal antibody raised against a partial recombinant CSNK2A1.
<b>Immunogen</b>	CSNK2A1 (AAH11668, 1 a.a. ~ 100 a.a) partial recombinant protein with GST tag. MW of the GST tag alone is 26 KDa.
<b>Sequence</b>	MSGPVPSRARVYTDVNTHRPREYWDYESHVVEWGNQDDYQLVRKLGRGKYSEVF EAINITNNEK VVKILKPVK KKKIKREIKILENLRGGPNIITLADI
<b>Host</b>	Mouse
<b>Reactivity</b>	Human
<b>Interspecies Antigen Sequence</b>	Mouse (100); Rat (100)
<b>Isotype</b>	IgG2a Kappa
<b>Quality Control Testing</b>	Antibody Reactive Against Recombinant Protein. Western Blot detection against Immunogen (36.63 KDa) .
<b>Storage Buffer</b>	In 1x PBS, pH 7.4
<b>Storage Instruction</b>	Store at -20°C or lower. Aliquot to avoid repeated freezing and thawing.

## Applications

- Western Blot (Cell lysate)

CSNK2A1 monoclonal antibody (M01), clone 3D9 Western Blot analysis of CSNK2A1 expression in Hela S3 NE ( Cat # L013V3 ).

[Protocol Download](#)

- Western Blot (Transfected lysate)

Western Blot analysis of CSNK2A1 expression in transfected 293T cell line by CSNK2A1 monoclonal antibody (M01), clone 3D9.

Lane 1: CSNK2A1 transfected lysate(45.1 KDa).

Lane 2: Non-transfected lysate.

[Protocol Download](#)

- Western Blot (Recombinant protein)

[Protocol Download](#)

- Sandwich ELISA (Recombinant protein)

Detection limit for recombinant GST tagged CSNK2A1 is approximately 3ng/ml as a capture antibody.

[Protocol Download](#)

- ELISA

- *In situ* Proximity Ligation Assay (Cell)

Proximity Ligation Analysis of protein-protein interactions between TP53 and CSNK2A1. HeLa cells were stained with anti-TP53 rabbit purified polyclonal 1:1200 and anti-CSNK2A1 mouse monoclonal antibody 1:50. Each red dot represents the detection of protein-protein interaction complex, and nuclei were counterstained with DAPI (blue).

- Immunofluorescence

Immunofluorescence of monoclonal antibody to CSNK2A1 on HeLa cell. [antibody concentration 10 ug/ml]

## Gene Info — CSNK2A1

Entrez GeneID [1457](#)

GeneBank Accession# [BC011668](#)

Protein Accession#	<a href="#">AAH11668</a>
Gene Name	CSNK2A1
Gene Alias	CK2A1, CKII
Gene Description	casein kinase 2, alpha 1 polypeptide
Omim ID	<a href="#">115440</a>
Gene Ontology	<a href="#">Hyperlink</a>
Gene Summary	Casein kinase II is a serine/threonine protein kinase that phosphorylates acidic proteins such as casein. The kinase exists as a tetramer and is composed of an alpha, an alpha-prime, and two beta subunits. The alpha subunits contain the catalytic activity while the beta subunits undergo autophosphorylation. The protein encoded by this gene represents the alpha subunit. While this gene is found on chromosome 20, a related transcribed pseudogene is found on chromosome 11. Three transcript variants encoding two different proteins have been found for this gene. [provided by RefSeq]
Other Designations	CK2 catalytic subunit alpha OTTHUMP00000029925 OTTHUMP00000029926 casein kinase II alpha 1 subunit casein kinase II alpha subunit protein kinase CK2

## Publication Reference

- [CK2 Inhibitors Enhance the Radiosensitivity of Human Non-Small Cell Lung Cancer Cells Through Inhibition of Stat3 Activation.](#)

Lin YC, Hung MS, Lin CK, Li JM, Lee KD, Li YC, Chen MF, Chen JK, Yang CT.

Cancer Biotherapy & Radiopharmaceuticals 2011 Jun; 26(3):381.

Application: WB-Ce, Human, A549, H460, H1650, H1975, H1703, H838 cells

## Pathway

- [Adherens junction](#)
- [Tight junction](#)
- [Wnt signaling pathway](#)

## Disease

- [Bipolar Disorder](#)

- [Cardiovascular Diseases](#)
- [Colorectal Neoplasms](#)
- [Diabetes Mellitus](#)
- [Edema](#)
- [Genetic Predisposition to Disease](#)
- [Psychiatric Status Rating Scales](#)
- [Psychotic Disorders](#)
- [Schizophrenia](#)