

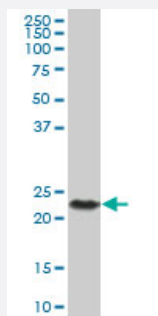
MaxPab®

CSH2 purified MaxPab mouse polyclonal antibody (B01P)

Catalog # H00001443-B01P

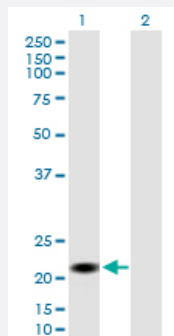
Size 50 ug

Applications



Western Blot (Tissue lysate)

CSH2 MaxPab polyclonal antibody. Western Blot analysis of CSH2 expression in human placenta.



Western Blot (Transfected lysate)

Western Blot analysis of CSH2 expression in transfected 293T cell line ([H00001443-T01](#)) by CSH2 MaxPab polyclonal antibody.

Lane 1: CSH2 transfected lysate(23.98 KDa).

Lane 2: Non-transfected lysate.

Specification

Product Description

Mouse polyclonal antibody raised against a full-length human CSH2 protein.

Immunogen

CSH2 (AAH22044, 1 a.a. ~ 217 a.a) full-length human protein.

Sequence

MAAGSRTSLLLA FALLCLPWLQEAGAVQTVPLSRLFDHAMLQAHRAHQLAIDTYQEFEETYIPKD
QKYSFLHDSQTSFCFSDSIPTPSNVEETQQKSNLELLRISLLIESWLEPVRFRLSMFANNLVYDTS
DSDDYHLLKDLEEGIQTL MGRLEDGSRRTGQILKQTYSKFD TN SHNH DALLKNYGLLYC FRKDMD
KVETFLRMVQCRSVEGSCGF

Host

Mouse

Reactivity

Human

Quality Control Testing	Antibody reactive against mammalian transfected lysate.
Storage Buffer	In 1x PBS, pH 7.4
Storage Instruction	Store at -20°C or lower. Aliquot to avoid repeated freezing and thawing.

Applications

- Western Blot (Tissue lysate)

CSH2 MaxPab polyclonal antibody. Western Blot analysis of CSH2 expression in human placenta.

[Protocol Download](#)

- Western Blot (Transfected lysate)

Western Blot analysis of CSH2 expression in transfected 293T cell line ([H00001443-T01](#)) by CSH2 MaxPab polyclonal antibody.

Lane 1: CSH2 transfected lysate(23.98 KDa).

Lane 2: Non-transfected lysate.

[Protocol Download](#)

Gene Info — CSH2

Entrez GeneID	1443
GeneBank Accession#	BC022044
Protein Accession#	AAH22044
Gene Name	CSH2
Gene Alias	CS-2, CSB, hCS-B
Gene Description	chorionic somatomammotropin hormone 2
Omim ID	118820
Gene Ontology	Hyperlink

Gene Summary

The protein encoded by this gene is a member of the somatotropin/prolactin family of hormones and plays an important role in growth control. The gene is located at the growth hormone locus on chromosome 17 along with four other related genes in the same transcriptional orientation; an arrangement which is thought to have evolved by a series of gene duplications. Although the five genes share a remarkably high degree of sequence identity, they are expressed selectively in different tissues. Alternative splicing generates additional isoforms of each of the five growth hormones. This particular family member is expressed mainly in the placenta and utilizes multiple transcription initiation sites. Expression of the identical mature proteins for chorionic somatomammotropin hormones 1 and 2 is upregulated during development, while the ratio of 1 to 2 increases by term. Structural and expression differences provide avenues for developmental regulation and tissue specificity. [provided by RefSeq]

Other Designations

chorionic somatomammotropin B|placental lactogen

Disease

- [Birth Weight](#)
- [Metabolic Syndrome X](#)