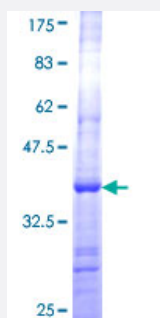


# CSH1 (Human) Recombinant Protein (Q01)

Catalog # H00001442-Q01

Size 25 ug, 10 ug

## Applications



## Specification

<b>Product Description</b>	Human CSH1 partial ORF ( NP_001308, 118 a.a. - 217 a.a.) recombinant protein with GST-tag at N-terminal.
<b>Sequence</b>	FLRSMFANNLVYDTSDSDDYHLLKDLEEGIQTLMGRLDGSRRTGQILKQTYSKFDTNSHNHDALL KNYGLLYCFRKDMDKVETFLRMVQCRSVEGSCGF
<b>Host</b>	Wheat Germ (in vitro)
<b>Theoretical MW (kDa)</b>	36.74
<b>Preparation Method</b>	<a href="#">in vitro wheat germ expression system</a>
<b>Purification</b>	Glutathione Sepharose 4 Fast Flow
<b>Quality Control Testing</b>	12.5% SDS-PAGE Stained with Coomassie Blue.
<b>Storage Buffer</b>	50 mM Tris-HCl, 10 mM reduced Glutathione, pH=8.0 in the elution buffer.
<b>Storage Instruction</b>	Store at -80°C. Aliquot to avoid repeated freezing and thawing.
<b>Note</b>	Best use within three months from the date of receipt of this protein.

## Applications

- Enzyme-linked Immunoabsorbent Assay
- Western Blot (Recombinant protein)
- Antibody Production
- Protein Array

## Gene Info — CSH1

**Entrez GeneID** [1442](#)

**GeneBank Accession#** [NM\\_001317](#)

**Protein Accession#** [NP\\_001308](#)

**Gene Name** CSH1

**Gene Alias** CSA, CSMT, FLJ75407, PL

**Gene Description** chorionic somatomammotropin hormone 1 (placental lactogen)

**Omim ID** [150200](#)

**Gene Ontology** [Hyperlink](#)

**Gene Summary** The protein encoded by this gene is a member of the somatotropin/prolactin family of hormones and plays an important role in growth control. The gene is located at the growth hormone locus on chromosome 17 along with four other related genes in the same transcriptional orientation; an arrangement which is thought to have evolved by a series of gene duplications. Although the five genes share a remarkably high degree of sequence identity, they are expressed selectively in different tissues. Alternative splicing generates additional isoforms of each of the five growth hormones, leading to further diversity and potential for specialization. This particular family member is expressed mainly in the placenta and utilizes multiple transcription initiation sites. Expression of the identical mature proteins for chorionic somatomammotropin hormones 1 and 2 is upregulated during development, although the ratio of 1 to 2 increases by term. Mutations in this gene result in placental lactogen deficiency and Silver-Russell syndrome. [provided by RefSeq]

**Other Designations** CS-1|choriomammotropin|chorionic somatomammotropin A|chorionic somatomammotropin hormone 1|hCS-A|placental lactogen

## Pathway

- [Cytokine-cytokine receptor interaction](#)
- [Jak-STAT signaling pathway](#)
- [Neuroactive ligand-receptor interaction](#)

## Disease

- [Birth Weight](#)
- [Body Weight](#)
- [Breast cancer](#)
- [Breast Neoplasms](#)
- [Genetic Predisposition to Disease](#)
- [Metabolic Syndrome X](#)