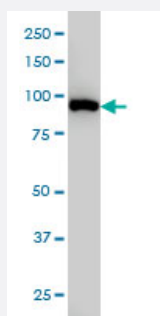


# CSE1L monoclonal antibody (M07A), clone 1C4

Catalog # H00001434-M07A

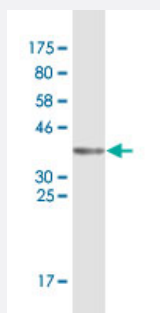
Size 200 uL

## Applications



### Western Blot (Cell lysate)

CSE1L monoclonal antibody (M07A), clone 1C4 Western Blot analysis of CSE1L expression in HeLa ( Cat # L013V1 ).



Western Blot detection against Immunogen (36.74 KDa) .

## Specification

<b>Product Description</b>	Mouse monoclonal antibody raised against a partial recombinant CSE1L.
<b>Immunogen</b>	CSE1L (NP_001307, 872 a.a. ~ 971 a.a) partial recombinant protein with GST tag. MW of the GST tag alone is 26 KDa.
<b>Sequence</b>	LIGLFELPEDDTIPDEEHFIDIEDTPGYQTAFSQLAFAGKKEHDPVGQMVNNPKIHLAQSLHKLSTA CPGRVPSMVSTSLNAEALQYLQGYLQAARVTLL
<b>Host</b>	Mouse
<b>Reactivity</b>	Human

Interspecies Antigen Sequence	Mouse (98); Rat (92)
Isotype	IgG1 Kappa
Quality Control Testing	Antibody Reactive Against Recombinant Protein. Western Blot detection against Immunogen (36.74 KDa) .
Storage Buffer	In ascites fluid
Storage Instruction	Store at -20°C or lower. Aliquot to avoid repeated freezing and thawing.

## Applications

- Western Blot (Cell lysate)

CSE1L monoclonal antibody (M07A), clone 1C4 Western Blot analysis of CSE1L expression in HeLa ( Cat # L013V1 ).

[Protocol Download](#)

- Western Blot (Recombinant protein)

[Protocol Download](#)

- ELISA

## Gene Info — CSE1L

Entrez GeneID	<a href="#">1434</a>
GeneBank Accession#	<a href="#">NM_001316</a>
Protein Accession#	<a href="#">NP_001307</a>
Gene Name	CSE1L
Gene Alias	CAS, CSE1, MGC117283, MGC130036, MGC130037, XPO2
Gene Description	CSE1 chromosome segregation 1-like (yeast)
Omim ID	<a href="#">601342</a>
Gene Ontology	<a href="#">Hyperlink</a>

**Gene Summary**

Proteins that carry a nuclear localization signal (NLS) are transported into the nucleus by the importin-alpha/beta heterodimer. Importin-alpha binds the NLS, while importin-beta mediates translocation through the nuclear pore complex. After translocation, RanGTP binds importin-beta and displaces importin-alpha. Importin-alpha must then be returned to the cytoplasm, leaving the NLS protein behind. The protein encoded by this gene binds strongly to NLS-free importin-alpha, and this binding is released in the cytoplasm by the combined action of RANBP1 and RANGAP1. In addition, the encoded protein may play a role both in apoptosis and in cell proliferation. [provided by RefSeq]

**Other Designations**

CSE1 chromosome segregation 1-like protein|OTTHUMP00000043373|cellular apoptosis susceptibility protein|chromosome segregation 1-like|importin-alpha re-exporter