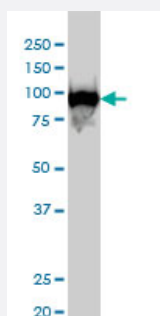


# CSE1L monoclonal antibody (M04), clone 2F4

Catalog # H00001434-M04

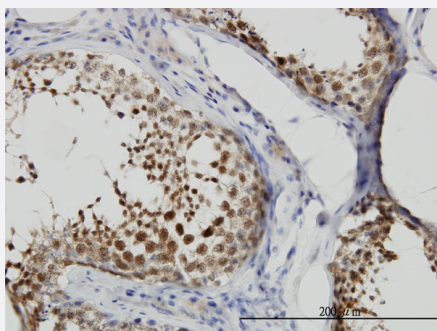
Size 100 ug

## Applications



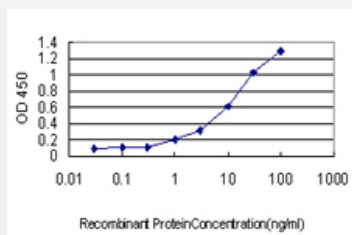
### Western Blot (Cell lysate)

CSE1L monoclonal antibody (M04), clone 2F4 Western Blot analysis of CSE1L expression in HeLa S3 NE ( Cat # L013V3 ).



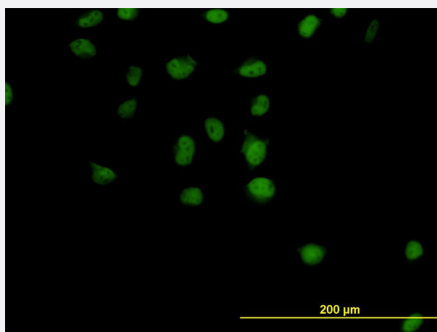
### Immunohistochemistry (Formalin/PFA-fixed paraffin-embedded sections)

Immunoperoxidase of monoclonal antibody to CSE1L on formalin-fixed paraffin-embedded human testis. [antibody concentration 6 ug/ml]



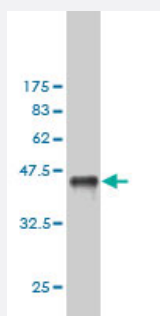
### Sandwich ELISA (Recombinant protein)

Detection limit for recombinant GST tagged CSE1L is approximately 0.1ng/ml as a capture antibody.



## Immunofluorescence

Immunofluorescence of monoclonal antibody to CSE1L on HeLa cell. [antibody concentration 10 ug/ml]



Western Blot detection against Immunogen (36.74 KDa) .

## Specification

<b>Product Description</b>	Mouse monoclonal antibody raised against a partial recombinant CSE1L.
<b>Immunogen</b>	CSE1L (NP_001307, 872 a.a. ~ 971 a.a) partial recombinant protein with GST tag. MW of the GST tag alone is 26 KDa.
<b>Sequence</b>	LIGLFELPEDDTIPDEEHFIDIEDTPGYQTAFSQLAFAGKKEHDPVGQMVNNPKIHLAQLHLKSLTA CPGRVPSMVSTSLNAEALQYLQGYLQAARVTLL
<b>Host</b>	Mouse
<b>Reactivity</b>	Human
<b>Interspecies Antigen Sequence</b>	Mouse (98); Rat (92)
<b>Isotype</b>	IgG1 kappa
<b>Quality Control Testing</b>	Antibody Reactive Against Recombinant Protein. Western Blot detection against Immunogen (36.74 KDa) .
<b>Storage Buffer</b>	In 1x PBS, pH 7.4
<b>Storage Instruction</b>	Store at -20°C or lower. Aliquot to avoid repeated freezing and thawing.

## Applications

- Western Blot (Cell lysate)

CSE1L monoclonal antibody (M04), clone 2F4 Western Blot analysis of CSE1L expression in Hela S3 NE ( Cat # L013V3 ).

[Protocol Download](#)

- Western Blot (Recombinant protein)

[Protocol Download](#)

- Immunohistochemistry (Formalin/PFA-fixed paraffin-embedded sections)

Immunoperoxidase of monoclonal antibody to CSE1L on formalin-fixed paraffin-embedded human testis. [antibody concentration 6 ug/ml]

[Protocol Download](#)

- Sandwich ELISA (Recombinant protein)

Detection limit for recombinant GST tagged CSE1L is approximately 0.1ng/ml as a capture antibody.

[Protocol Download](#)

- ELISA

- Immunofluorescence

Immunofluorescence of monoclonal antibody to CSE1L on HeLa cell. [antibody concentration 10 ug/ml]

## Gene Info — CSE1L

Entrez GeneID [1434](#)

GeneBank Accession# [NM\\_001316](#)

Protein Accession# [NP\\_001307](#)

Gene Name CSE1L

Gene Alias CAS, CSE1, MGC117283, MGC130036, MGC130037, XPO2

Gene Description CSE1 chromosome segregation 1-like (yeast)

Omim ID [601342](#)

## Gene Ontology

[Hyperlink](#)**Gene Summary**

Proteins that carry a nuclear localization signal (NLS) are transported into the nucleus by the importin-alpha/beta heterodimer. Importin-alpha binds the NLS, while importin-beta mediates translocation through the nuclear pore complex. After translocation, RanGTP binds importin-beta and displaces importin-alpha. Importin-alpha must then be returned to the cytoplasm, leaving the NLS protein behind. The protein encoded by this gene binds strongly to NLS-free importin-alpha, and this binding is released in the cytoplasm by the combined action of RANBP1 and RANGAP1. In addition, the encoded protein may play a role both in apoptosis and in cell proliferation. [provided by RefSeq]

**Other Designations**

CSE1 chromosome segregation 1-like protein|OTTHUMP00000043373|cellular apoptosis susceptibility protein|chromosome segregation 1-like|importin-alpha re-exporter